

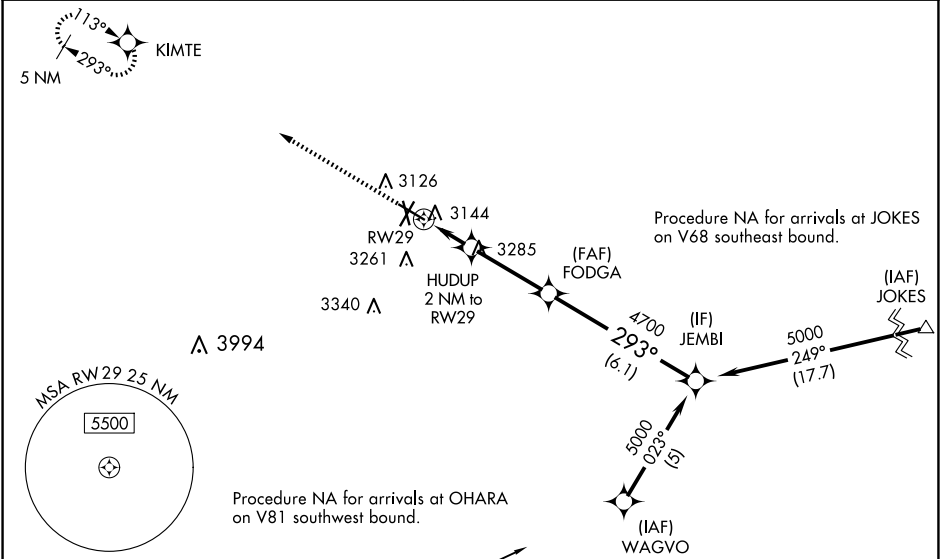
WAAS CH 86318 W29A	APP CRS 293°	Rwy Idg TDZE Apt Elev	6200 2980 3004
--	------------------------	-----------------------------	---

RNAV (GPS) RWY 29

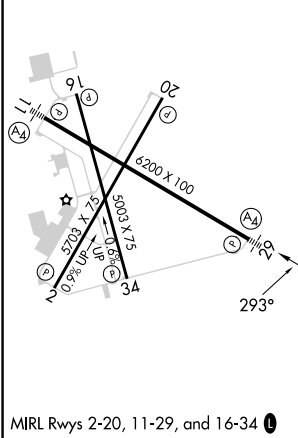
ODESSA-SCHLEMEYER FLD (ODO)

RNP APCH.	<p>MALS </p> <p>MISSED APPROACH: Climb to 5000 direct KIMTE and hold.</p>
<p>⚠ Baro-VNAV NA when using Midland Intl Air and Space Port altimeter setting. For uncompensated Baro-VNAV systems, LNAV/VNAV NA below -21°C or above 43°C. Circling NA south of Rwy 2 and 34. When local altimeter setting not received use Midland Intl Air and Space Port altimeter setting and increase all DAs 41 feet and all MDAs 60 feet and increase LNAV Cats C and D visibility 1/8 SM, Circling Cat C visibility 1/4 SM. VDP NA with Midland Intl Air and Space Port altimeter setting.</p>	

ASOS 119.275	MIDLAND APP CON★ 124.6 256.875	CLNC DEL 121.7	UNICOM 123.0 (CTAF) 0
------------------------	--	--------------------------	---------------------------------



ELEV 3004	TDZE 2980
-----------	-----------



OHARA	5000	KIMTE	FODGA	JEMBI
5000	3660*	4700	5000	
* LNAV only.		HUDUP 2 NM to RW29	4700	JEMBI
* 1.2 NM to RW29		3660*	4700	5000
1.2 0.8 3.2 NM		4700	6.1 NM	
CATEGORY	A	B	C	D
LPV DA		3180-3/4	200 (200-3/4)	
LNAV/VNAV DA		3414-1 1/2	434 (500-1 1/2)	
LNAV MDA	3400-1	420 (500-1)	3400-1 1/4	420 (500-1 1/4)
CIRCLING	3460-1	456 (500-1)	3600-1 1/2	3600-2
			596 (600-1 1/2)	596 (600-2)

GP 3.00° TCH 40

Procedure Turn NA

SC-3, 20 FEB 2025 to 20 MAR 2025

SC-3, 20 FEB 2025 to 20 MAR 2025