

ODESSA, TEXAS

AL-5689 (FAA)

25051

VORTAC MAF <b>112.6</b> Chan <b>73</b>	APP CRS <b>231°</b>	Rwy Idg TDZE Apt Elev <b>N/A</b> <b>N/A</b> <b>3004</b>
--	------------------------	--

# VOR-A

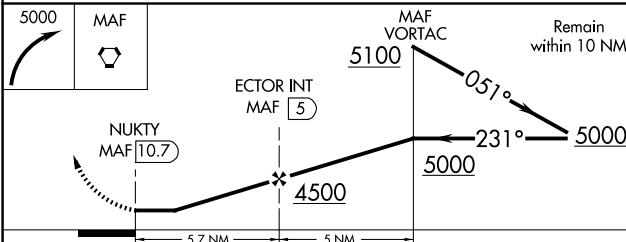
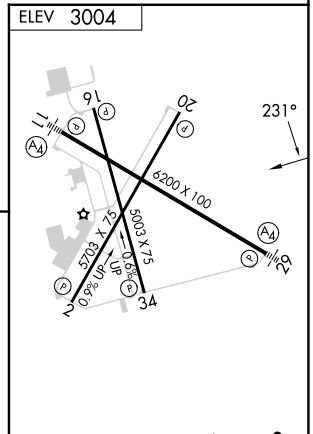
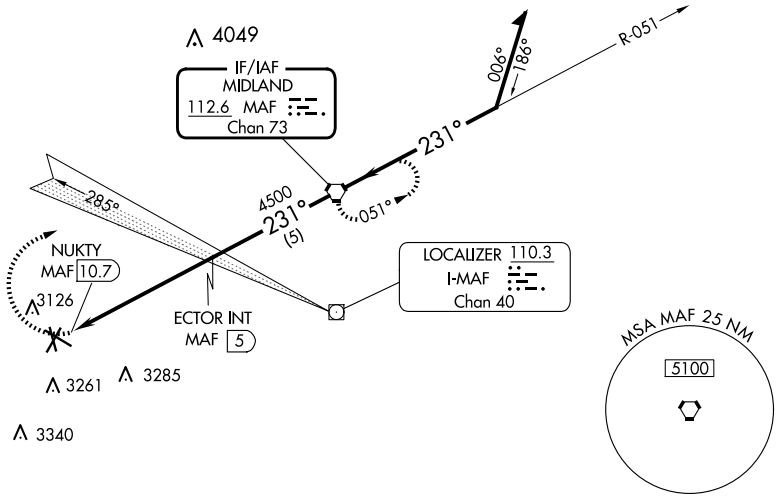
ODESSA-SCHLEMEYER FLD (ODO)

**⚠** Circling NA south of Rwy 2 and 34. When local altimeter setting not received use Midland Intl Air and Space Port altimeter setting and increase all MDA 60 feet, increase Circling Cat C visibility 1/4 SM.

**MISSED APPROACH:** Climbing right turn to 5000 direct MAF VORTAC and hold.

ASOS <b>119.275</b>	MIDLAND APP CON★ <b>124.6 256.875</b>	CLNC DEL <b>121.7</b>	UNICOM <b>123.0 (CTAF)</b>
------------------------	--	--------------------------	-------------------------------

NoPT for arrival on MAF VORTAC airway radials 357 CW 102.



CATEGORY	A		B		C		D		FAF to MAP 5.7 NM					
	3460-1 456 (500-1)		3600-1½ 596 (600-1½)		3600-2 596 (600-2)		3600-2 596 (600-2)		Knots	60	90	120	150	180
CIRCLING	3460-1 456 (500-1)		3600-1½ 596 (600-1½)		3600-2 596 (600-2)		3600-2 596 (600-2)		Min:Sec	5:42	3:48	2:51	2:17	1:54

ODESSA, TEXAS

Amdt 7B 04NOV21

31° 55'N-102° 23'W

ODESSA-SCHLEMEYER FLD (ODO)

# VOR-A

SC-3, 20 FEB 2025 to 20 MAR 2025

SC-3, 20 FEB 2025 to 20 MAR 2025