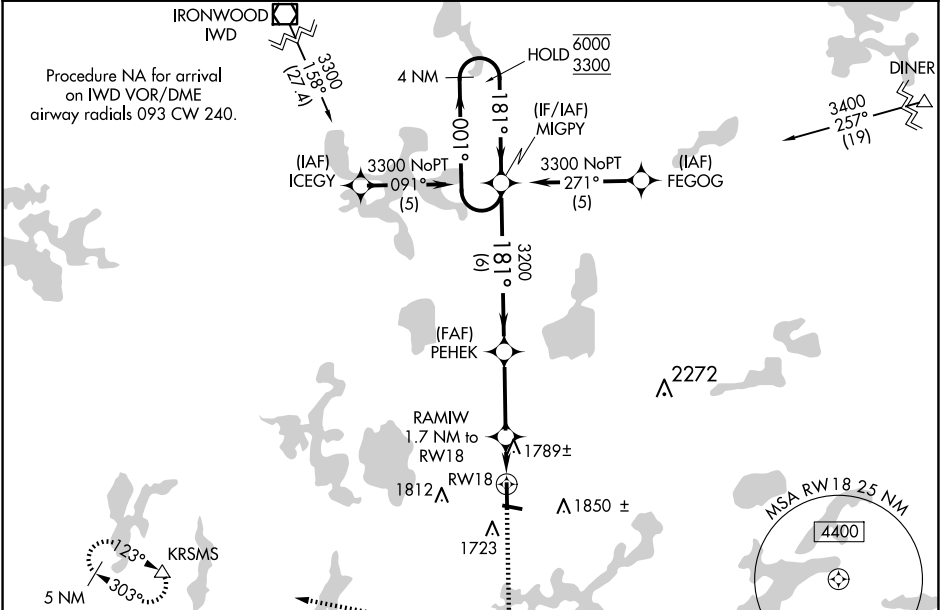


WAAS CH <b>72915</b> <b>W18A</b>	APP CRS <b>181°</b>	Rwy Idg TDZE Apt Elev	<b>5150</b> <b>1630</b> <b>1630</b>
----------------------------------------	------------------------	-----------------------------	-------------------------------------------

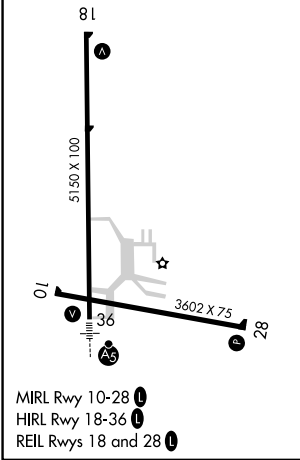
# RNAV (GPS) RWY 18

LAKELAND/NOBLE F LEE MEML FLD (A.R.V)

RNP APCH.		MISSED APPROACH: Climb to 6000 direct CEPMU and right turn on track 283° to KRMSMS and hold, continue climb-in-hold to 6000.
AWOS-3 <b>121.125</b>	MINNEAPOLIS CENTER <b>133.65 281.5</b>	UNICOM <b>122.7 (CTAF)</b>



ELEV 1630	TDZE 1630
-----------	-----------



6000	CEPMU	KRMSMS	4 NM Holding Pattern
↑	✦	↷ tr 283°	△
* LNAV only.		RAMIW 1.7 NM to RW18	PEHEK 3200
RW18		*1.2 NM to RW18	*2200
1.2 NM		0.6 NM	3 NM
CATEGORY		A	B
LPV DA		1974-1¼ 344 (400-1¼)	
LNAV/VNAV DA		2101-1¾ 471 (500-1¾)	
LNAV MDA		2040-1 410 (500-1)	2040-1¼ 410 (500-1¼)
CIRCLING		2100-1 470 (500-1)	2200-1 570 (600-1)
		2200-1½ 570 (600-1½)	2220-2 590 (600-2)

EC-3, 20 FEB 2025 to 20 MAR 2025

EC-3, 20 FEB 2025 to 20 MAR 2025