

LOC/DME I-STF <b>109.9</b> Chan <b>36</b>	APP CRS <b>360°</b>	Rwy Idg <b>5550</b> TDZE <b>326</b> Apt Elev <b>333</b>
---	------------------------	---

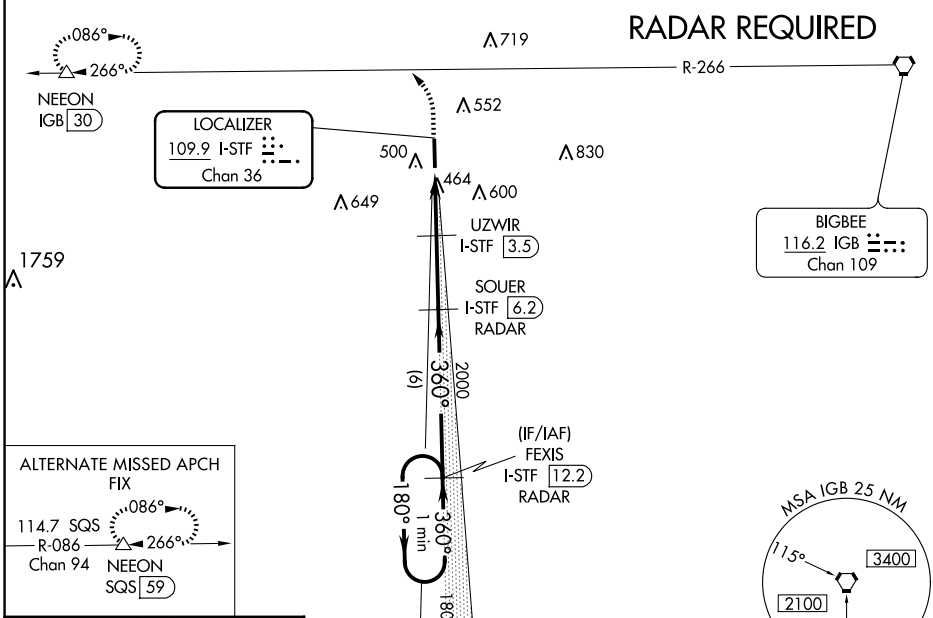
# LOC/DME RWY 36

GEORGE M BRYAN (STF)

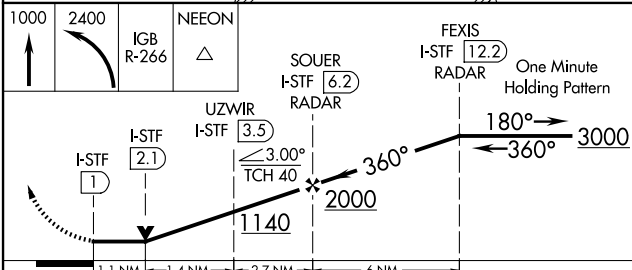
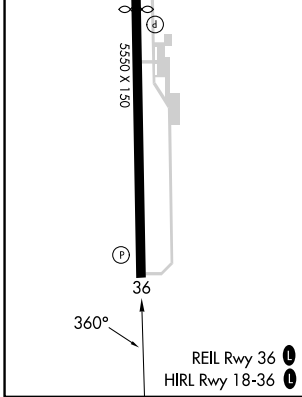
**NA** DME Required. When local altimeter setting not received, use Golden Triangle altimeter setting and increase all MDA 40 feet; increase S-36 Cats C/D visibility ½ mile and Circling Cat C visibility ¼ mile. VDP NA when using Golden Triangle altimeter setting.

**MISSED APPROACH:** Climb to 1000, then climbing left turn to 2400 on IGB VORTAC R-266 to NEEON/IGB 30 DME and hold.

AWOS-3PT <b>118.975</b>	COLUMBUS APP CON ★ <b>135.6 323.275</b>	CLNC DEL <b>126.25</b>	UNICOM <b>122.7 (CTAF) 0</b>
----------------------------	--	---------------------------	---------------------------------



ELEV <b>333</b>	TDZE <b>326</b>
-----------------	-----------------



CATEGORY	A	B	C	D
S-36	720-1	395 (400-1)	720-1½	395 (400-1½)
<b>CIRCLING</b>	920-1	587 (600-1)	920-1½ 587 (600-1½)	1020-2¼ 687 (700-2¼)

SC-4, 20 FEB 2025 to 20 MAR 2025

SC-4, 20 FEB 2025 to 20 MAR 2025