

WAAS CH 50419 W18A	APP CRS 180°	Rwy Idg 4171 TDZE 333 Apt Elev 333
--	------------------------	---

RNAV (GPS) RWY 18

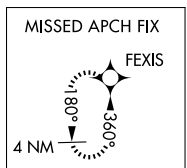
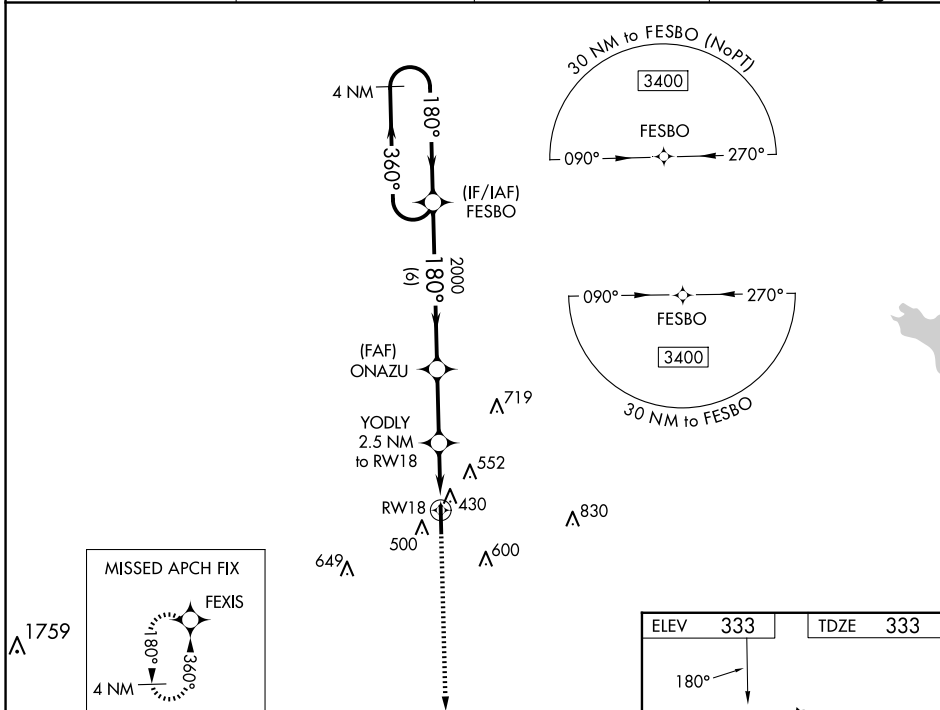
GEORGE M BRYAN (STP)

RNP APCH-GPS.

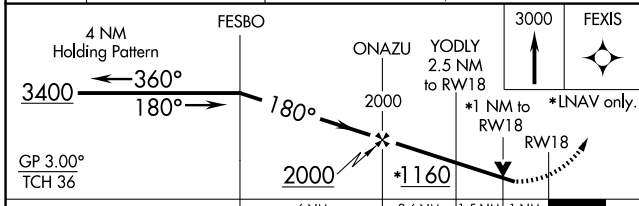
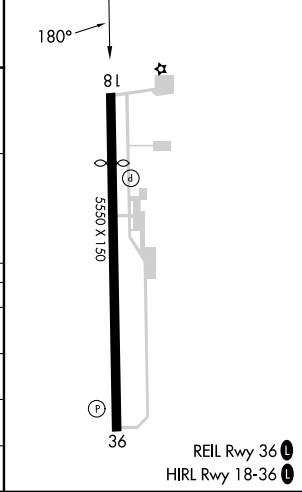
▼
▲ For uncompensated Baro-VNAV systems, LNAV/VNAV NA below -15°C or above 54°C. Baro-VNAV and VDP NA when using Golden Triangle Rgnl altimeter setting. Rwy 18 helicopter visibility reduction below ¾ SM NA. When local altimeter setting not received, use Golden Triangle Rgnl altimeter setting and increase LPV DA to 673 feet, increase LNAV/VNAV DA to 656 feet and visibilities all Cats ½ SM. Increase all MDAs 40 feet and LNAV visibility Cat C/D ½ SM, and Circling visibility Cat C ¼ SM.

MISSED APPROACH: Climb to 3000 direct FEXIS and hold.

AWOS-3PT 118.975	COLUMBUS APP CON * 135.6 323.275	CINC DEL 126.25	UNICOM 122.7 (CTAF) 0
----------------------------	--	---------------------------	---------------------------------



ELEV 333	TDZE 333
----------	----------



CATEGORY	A	B	C	D
LPV DA		633-1	300 (300-1)	
LNAV/VNAV DA		616-1	283 (300-1)	
LNAV MDA		680-1	347 (400-1)	
CIRCLING	920-1	587 (600-1)	920-1½ 587 (600-1½)	1020-2¼ 687 (700-2¼)

SC-4, 20 FEB 2025 to 20 MAR 2025

SC-4, 20 FEB 2025 to 20 MAR 2025