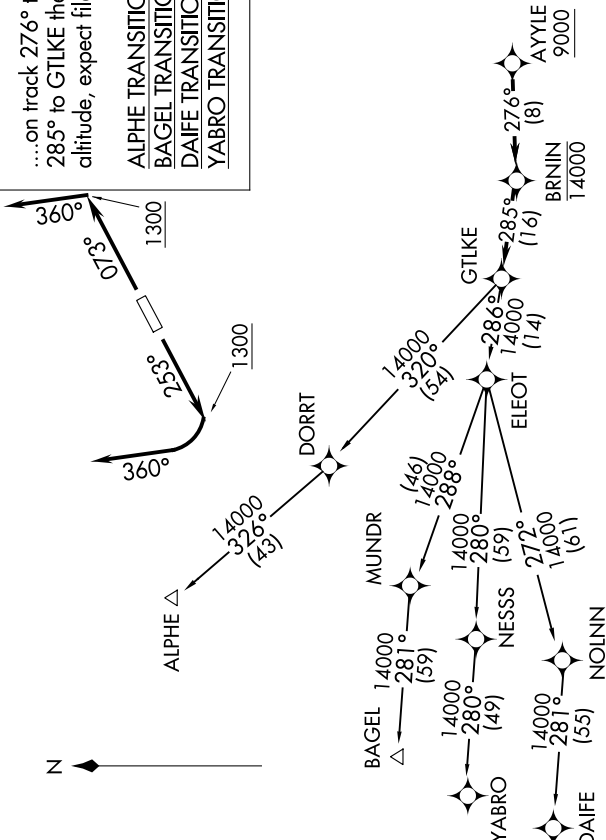


GTLKE FOUR DEPARTURE (RNAV)

EC-2, 20 FEB 2025 to 20 MAR 2025

TOP ALTITUDE: ASSIGNED BY ATC

ASOS 118.925
 CLNC DEL 125.7
 CTAF 122.7
 CLEVELAND DEP CON 125.35 346.325



DEPARTURE ROUTE DESCRIPTION

TAKEOFF RUNWAY 7: Climb on heading 073° to 1300, then on heading 360° or as assigned by ATC for RADAR vectors to cross AYYLE at or above 9000, thence....
TAKEOFF RUNWAY 25: Climb on heading 253° to 1300, then right turn heading 360° or as assigned by ATC for RADAR vectors to cross AYYLE at or above 9000, thence....

...on track 276° to cross BRNNIN at or below 14000, then on track 285° to GTLKE then on (transition). Maintain ATC assigned altitude, expect filed altitude 10 minutes after departure.

- ALPHE TRANSITION (GTLKE4.ALPHE)
- BAGEL TRANSITION (GTLKE4.BAGEL)
- DAIFE TRANSITION (GTLKE4.DAIFE)
- YABRO TRANSITION (GTLKE4.YABRO)

- NOTE: RADAR required.
- NOTE: RNAV 1.
- NOTE: DME/DME/IRU or GPS required.
- NOTE: BAGEL TRANSITION: For aircraft landing MDW only, or as assigned by ATC.
- NOTE: DAIFE TRANSITION: For aircraft landing ORD only, or as assigned by ATC.

TAKEOFF MINIMUMS:

Rwys 7, 25: Standard with a minimum climb of 500' per NM to 1300.

NOTE: Chart not to scale.

GTLKE FOUR DEPARTURE (RNAV)

EC-2, 20 FEB 2025 to 20 MAR 2025