

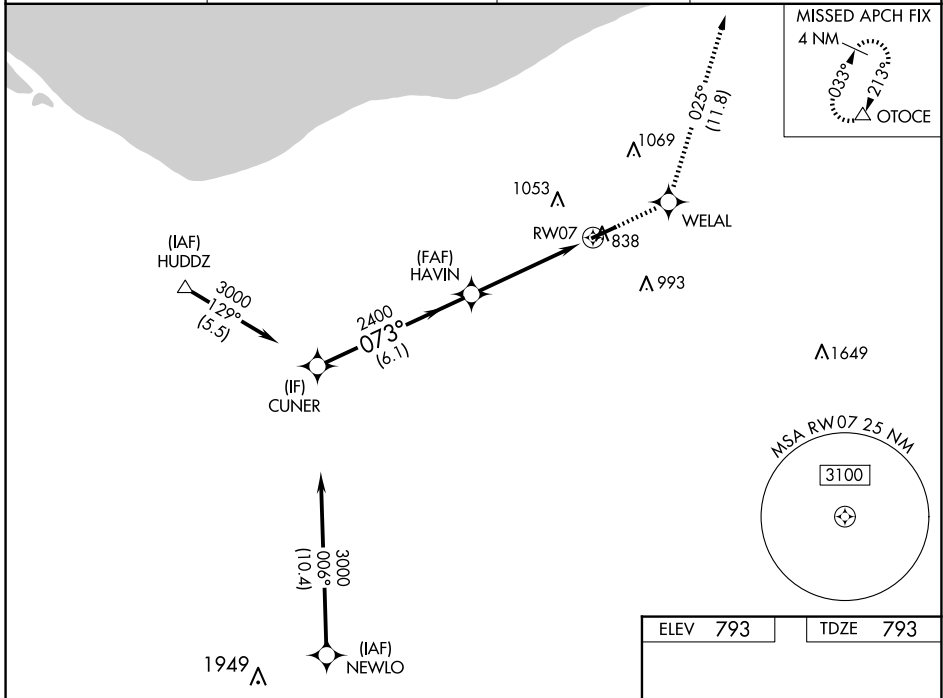
WAAS CH <b>99612</b> <b>W07A</b>	APP CRS <b>073°</b>	Rwy Idg TDZE Apt Elev	<b>5002</b> <b>793</b> <b>793</b>
--	------------------------	-----------------------------	---

# RNAV (GPS) RWY 7

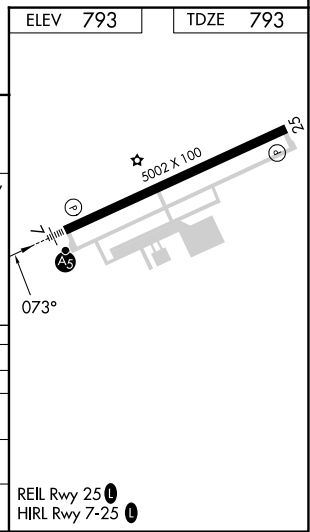
LORAIN COUNTY RGNL (L.P.R.)

RNP APCH.	MALS R	MISSED APPROACH: Climb to 3000 direct WELAL and on track 025° to OTOCE and hold.
For uncompensated Baro-VNAV systems, LNAV/VNAV NA below -16°C (4°F) or above 54°C (130°F).		

ASOS <b>118.925</b>	CLEVELAND APP CON <b>125.35 346.325</b>	CLNC DEL <b>125.7</b>	UNICOM <b>122.7</b> (CTAF)
------------------------	--	--------------------------	-------------------------------



CUNER		HAVIN		WELAL		tr 025°		OTOCE	
3000		2400		3000		tr 025°		△	
073°		073°		*1.5 NM to RW07		*LNAV only			
2400		2400		RW07					
GP 3.00°		GP 3.00°		GP 3.00°		GP 3.00°		GP 3.00°	
TCH 54		TCH 54		TCH 54		TCH 54		TCH 54	
6.1 NM		3.3 NM		1.5 NM					
CATEGORY	A	B		C		D			
LPV DA		993-½		200 (200-½)					
LNAV/VNAV DA		1133-¾		340 (400-¾)					
LNAV MDA	1340-½	547 (600-½)		1340-1 1/8		547 (600-1 1/8)			
CIRCLING	1340-1 547 (600-1)	1360-1 567 (600-1)		1420-1 3/4 627 (700-1 3/4)		1420-2 627 (700-2)			



EC-2, 20 FEB 2025 to 20 MAR 2025

EC-2, 20 FEB 2025 to 20 MAR 2025