

WAAS CH 99424 W23A	APP CRS 230°	Rwy Idg TDZE Apt Elev	5001 847 847
--	------------------------	-----------------------------	---

RNAV (GPS) RWY 23

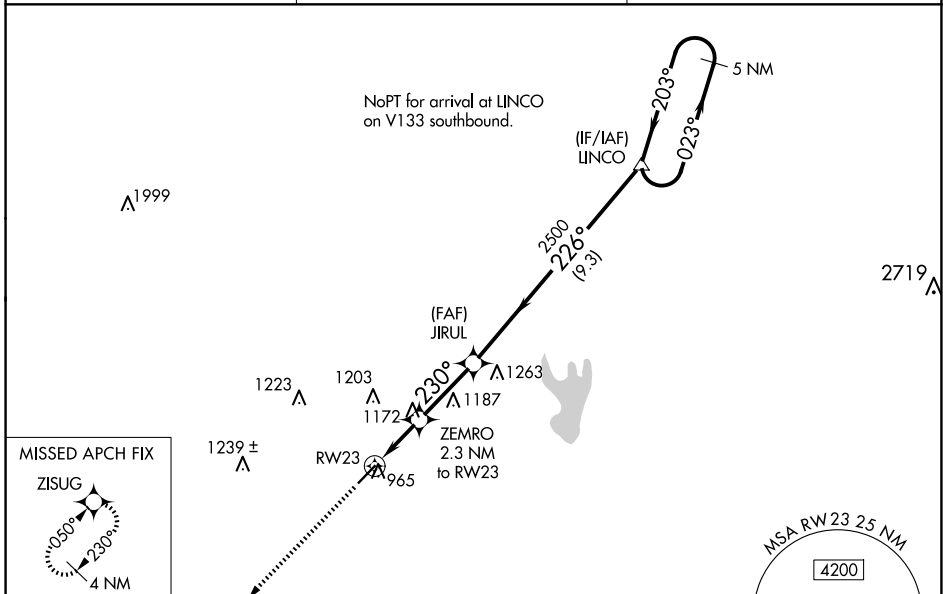
SHELBY-CLEVELAND COUNTY RGNL (EHO)

RNP APCH.

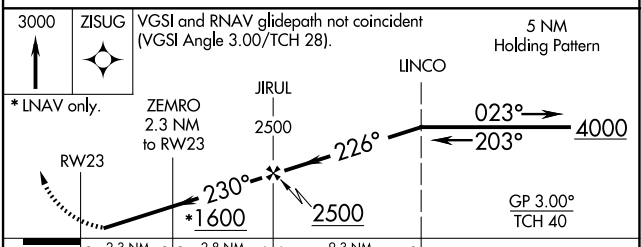
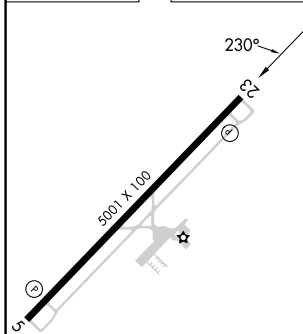
Baro-VNAV NA when using Charlotte altimeter setting. For uncompensated Baro-VNAV systems, LNAV/VNAV NA below -16°C or above 38°C. When local altimeter setting not received, use Charlotte altimeter setting and increase all DA 88 feet and all MDA 100 feet; increase LPV all Cats visibility 1/8 SM and LNAV/VNAV all Cats, LNAV Cat C/D visibility 1/4 SM.

MISSED APPROACH:
Climb to 3000 direct ZISUG and hold.

AWOS-3 118.425	CHARLOTTE APP CON 120.05 257.2	UNICOM 122.8 (CTAF) 1
--------------------------	--	--



ELEV 847	TDZE 847
-----------------	-----------------



CATEGORY	A	B	C	D
LPV DA		1097-1	250 (300-1)	
LNAV/VNAV DA		1123-1	276 (300-1)	
LNAV MDA	1440-1	593 (600-1)	1440-1¾	593 (600-1¾)

SE-2, 20 FEB 2025 to 20 MAR 2025

SE-2, 20 FEB 2025 to 20 MAR 2025