

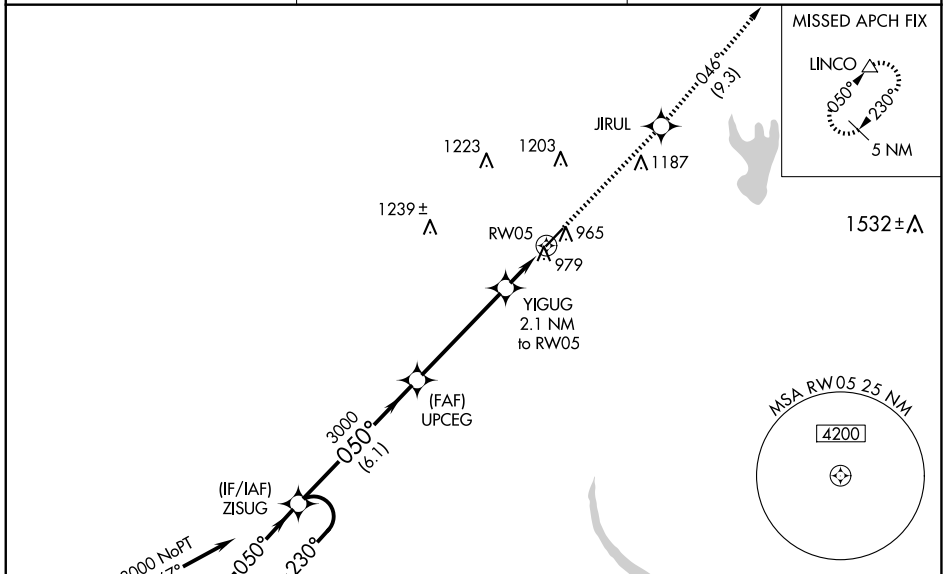
WAAS CH 63124 W05A	APP CRS 050°	Rwy Idg TDZE Apt Elev	5001 847 847
--	------------------------	-----------------------------	---

RNAV (GPS) RWY 5

SHELBY-CLEVELAND COUNTY RGNL (EHO)

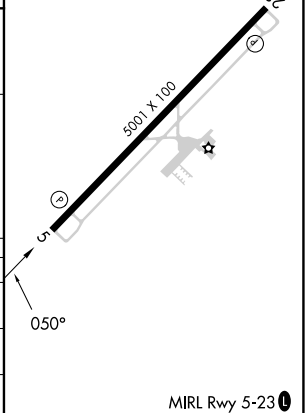
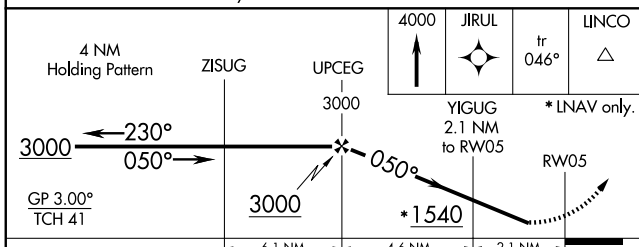
RNP APCH.	<p>Baro-VNAV NA when using Charlotte altimeter setting. For uncompensated Baro-VNAV systems, LNAV/VNAV NA below -16°C or above 38°C. Rwy 5 helicopter visibility reduction below 3/4 SM NA. When local altimeter setting not received, use Charlotte altimeter setting and increase all DA 88 feet and all MDA 100 feet; increase LPV all Cats visibility 1/8 SM and LNAV/VNAV all Cats, LNAV Cat C/D visibility 1/4 SM.</p>	<p>MISSED APPROACH: Climb to 4000 direct JIRUL and on track 046° to LINCO and hold.</p>
-----------	--	---

AWOS-3 118.425	CHARLOTTE APP CON 120.05 257.2	UNICOM 122.8 (CTAF) 0
--------------------------	--	---------------------------------



SPARTANBURG SPA (IAF) Procedure NA for arrivals on SPA VORTAC airway radials 360 CW 103.

ELEV 847	TDZE 847
----------	----------



CATEGORY	A	B	C	D
LPV DA		1097-1	250 (300-1)	
LNAV/VNAV DA		1173-1 1/8	326 (400-1 1/8)	
LNAV MDA	1240-1	393 (400-1)	1240-1 1/8	393 (400-1 1/8)

SE-2, 20 FEB 2025 to 20 MAR 2025

SE-2, 20 FEB 2025 to 20 MAR 2025