

APP CRS	Rwy Idg	<b>6000</b>
<b>055°</b>	TDZE	<b>670</b>
	Apt Elev	<b>681</b>

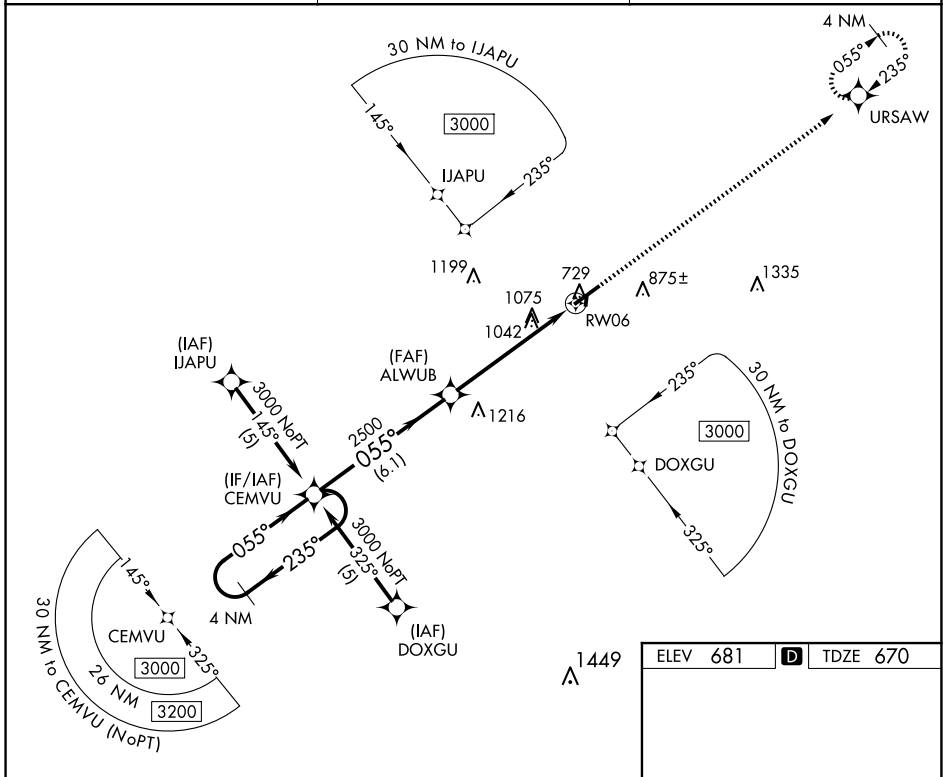
# RNAV (GPS) RWY 6

MAURY COUNTY RGNL (MRC)

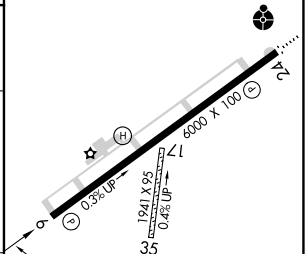
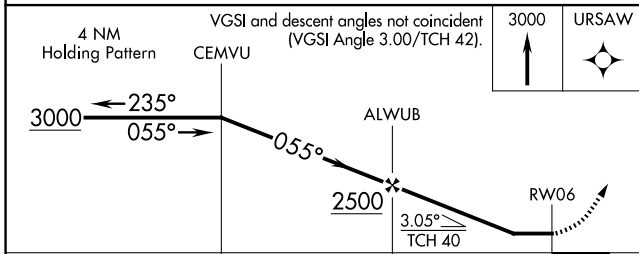
**⚠** DME/DME RNP-0.3 NA. Visibility reduction by helicopters NA. When local altimeter setting not received, use Nashville Intl altimeter setting; increase all MDA 120 feet and increase LNAV Cat B visibility ¼ SM, Cats C and D visibility ½ SM, increase Circling Cat C visibility ½ SM.

**MISSED APPROACH:**  
Climb to 3000 direct URSAW and hold.

<b>AWOS-3</b> <b>128.625</b>	<b>MEMPHIS CENTER</b> <b>125.85 379.25</b>	<b>UNICOM</b> <b>122.8 (CTAF) 0</b>
---------------------------------	---	--



ELEV 681	<b>D</b>	TDZE 670
----------	----------	----------



CATEGORY	A	B	C	D
LNAV MDA	1340-1	670 (700-1)	1340-1¾ 670 (700-1¾)	1340-2 670 (700-2)
CIRCLING	1340-1 659 (700-1)	1360-1 679 (700-1)	1380-2 699 (700-2)	1620-3 939 (1000-3)

MIRL Rwy 6-24  
REIL Rwy 6  
REIL Rwy 24 **0**

SE-1, 20 FEB 2025 to 20 MAR 2025

SE-1, 20 FEB 2025 to 20 MAR 2025