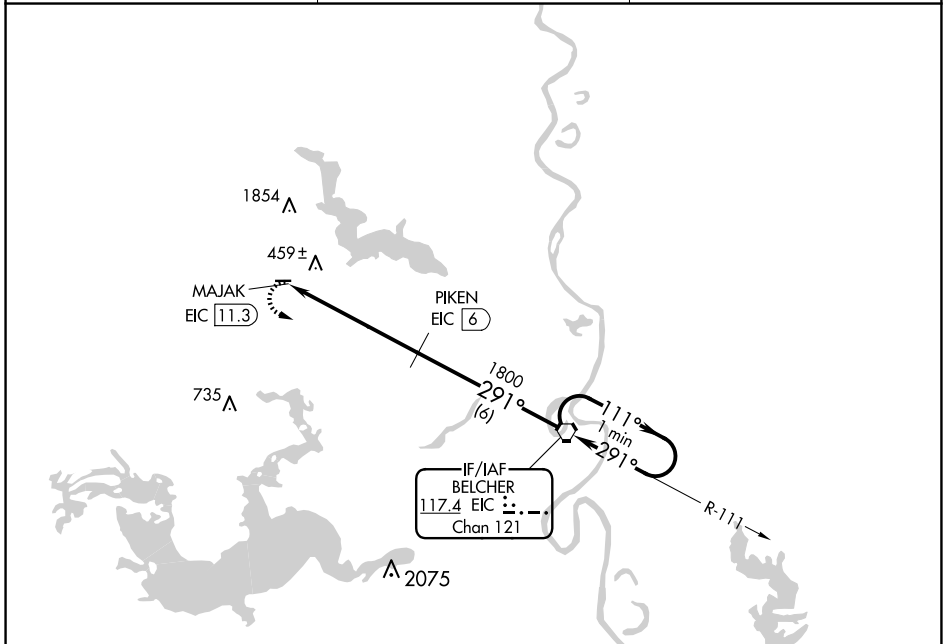


VORTAC EIC 117.4 Chan 121	APP CRS 291°	Rwy Idg TDZE Apt Elev	N/A N/A 260
---	------------------------	-----------------------------	--

VOR/DME-A
VIVIAN (3F4)

<p>▼ Circling NA north of Rwy 9-27. Use Shreveport Rgnl altimeter setting; when not received, use Shreveport Downtown altimeter setting and increase all MDAs 20 feet. Procedure NA at night. Helicopter visibility reduction below 1 SM NA.</p> <p>▲ NA</p>	<p>MISSED APPROACH: Climbing left turn to 3000 direct EIC VORTAC and hold.</p>
--	---

SHREVEPORT APP CON 119.9 335.55	GCO 135.075	UNICOM 122.8 (CTAF) 0
---	-----------------------	---------------------------------



3000	EIC	One Minute Holding Pattern	
MAJAK EIC 11.3	PIKEN EIC 6	111°	291°
1800	3000	291°	111°
5.3 NM	6 NM		

CATEGORY	A	B	C	D	MIRL Rwy 9-27 0
CIRCLING	860-1	600 (600-1)	900-1 3/4 640 (700-1 3/4)	NA	REIL Rwy 9 0 REIL Rwy 27

SC-4, 20 FEB 2025 to 20 MAR 2025

SC-4, 20 FEB 2025 to 20 MAR 2025