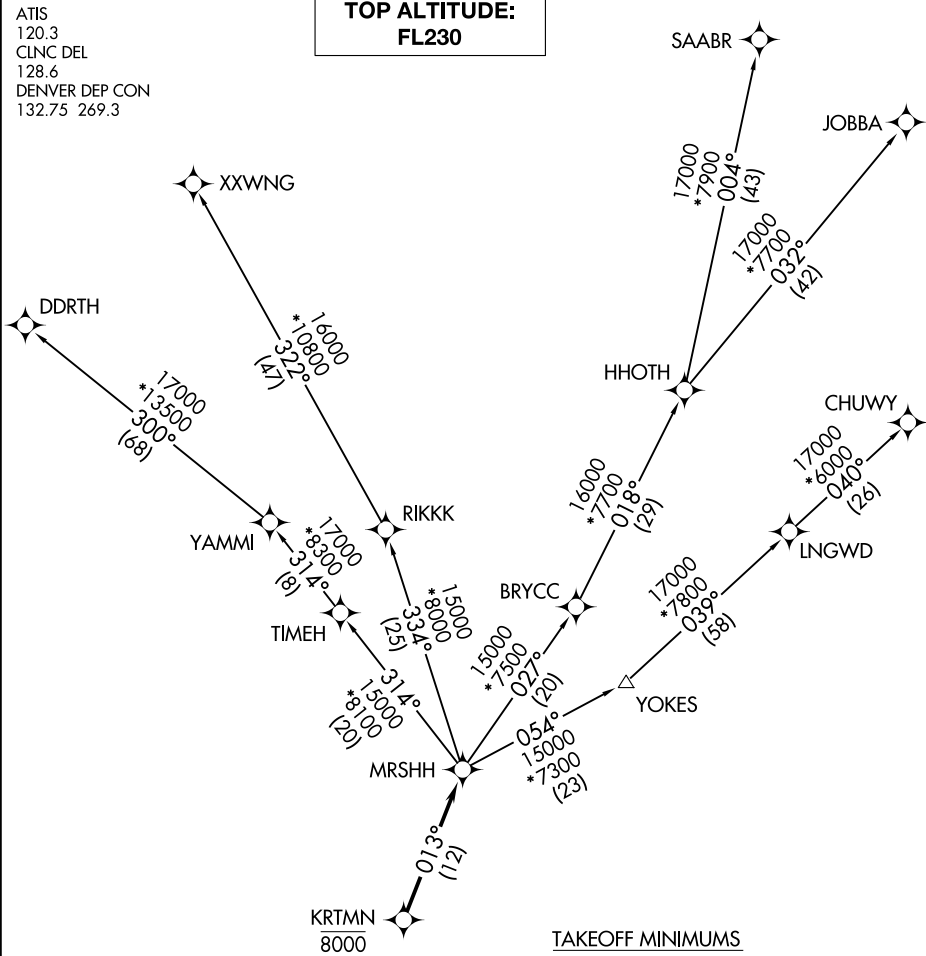


ATIS
120.3
CLNC DEL
128.6
DENVER DEP CON
132.75 269.3

**TOP ALTITUDE:
FL230**



SW-1, 20 FEB 2025 to 20 MAR 2025

SW-1, 20 FEB 2025 to 20 MAR 2025



DEPARTURE ROUTE DESCRIPTION

TAKEOFF RUNWAYS 17L/R: Climb on heading 170° to 6385, then on heading 170° or as assigned by ATC. Thence. . . .

TAKEOFF RUNWAYS 35L/R: Climb on heading 350° to 6385, then on heading 350° or as assigned by ATC. Thence. . . .

. . . .expect RADAR vectors to cross KRTMN at 8000 then on track 013° to MRS HH, then on (transition) maintain FL230 or filed lower altitude. Expect higher filed altitude ten minutes after departure.

CHUWY TRANSITION (MRS HH2.CHUWY)

DDRTH TRANSITION (MRS HH2.DDRTH)

JOBBA TRANSITION (MRS HH2.JOBBA)

SAABR TRANSITION (MRS HH2.SAABR)

XXWNG TRANSITION (MRS HH2.XXWNG)

SW-1, 20 FEB 2025 to 20 MAR 2025

SW-1, 20 FEB 2025 to 20 MAR 2025