

(KRITR6.KRITR) 24081

KRITR SIX DEPARTURE (RNAV)

AL-5726 (FAA)

CHARLOTTE/MONROE EXEC (EQY)
MONROE, NORTH CAROLINA

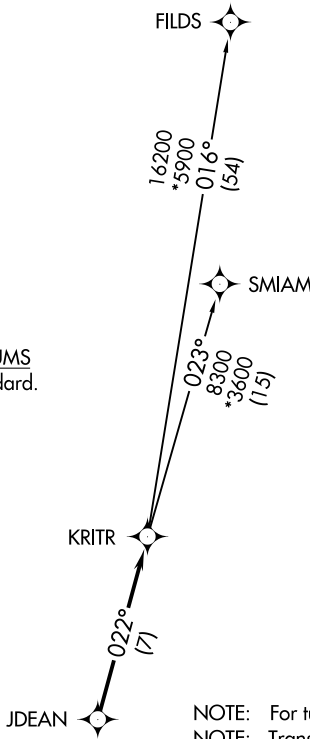
CHARLOTTE DEP CON
120.05 307.8
ASOS
135.775
CLNC DEL
132.55
UNICOM (CTAF)
122.7

**TOP ALTITUDE:
3000**

RNAV 1 - DME/DME/IRU or GPS.

RADAR required.

TAKEOFF MINIMUMS
Rwys 5, 23: Standard.



- NOTE: For turbo jets only.
- NOTE: Transponder code will be issued via PDC or Charlotte CLNC DEL.
- NOTE: If unable to accept climb rates, advise ATC on initial contact.
- NOTE: Upon reaching 10000 MSL, accelerate to and maintain 280K, if unable advise ATC.

NOTE: Chart not to scale.



DEPARTURE ROUTE DESCRIPTION

Climb on heading assigned by ATC, on RADAR vectors to JDEAN, then on track 022° to KRITR, then on assigned transition. Maintain 3000, expect filed altitude within 10 minutes after departure.

FILDS TRANSITION (KRITR6.FILDS)
SMIAM TRANSITION (KRITR6.SMIAM)

KRITR SIX DEPARTURE (RNAV)

(KRITR6.KRITR) 21MAR24

MONROE, NORTH CAROLINA
CHARLOTTE/MONROE EXEC (EQY)

SE-2, 20 FEB 2025 to 20 MAR 2025

SE-2, 20 FEB 2025 to 20 MAR 2025