

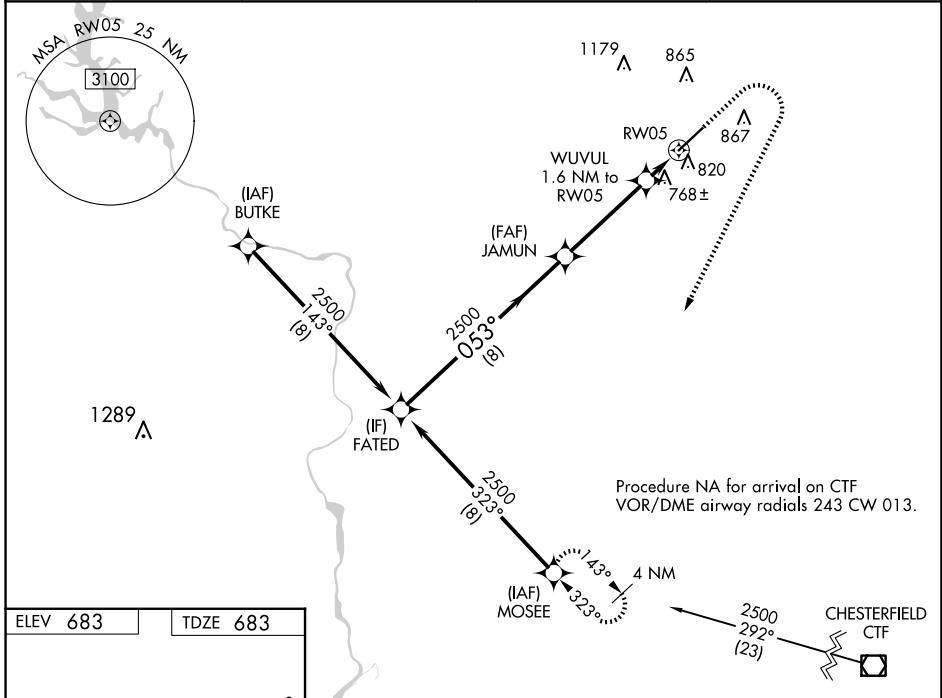
WAAS CH 66002 W05A	APP CRS 053°	Rwy Idg TDZE Apt Elev	7001 683 683
--	------------------------	-----------------------------	---

RNAV (GPS) RWY 5

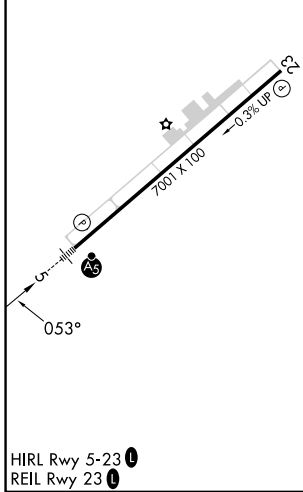
CHARLOTTE/MONROE EXEC (EQY)

RNP APCH-GPS.		MALSR	MISSED APPROACH: Climb to 1140 then climbing right turn to 2500 direct MOSEE and hold.
<p>⚠ Rwy 5 helicopter visibility reduction below $\frac{3}{4}$ SM NA. For uncompensated Baro-VNAV systems, LNAV/VNAV NA below -7°C or above 54°C. Inop table does not apply to LPV all Cats. For inop ALS, increase LNAV/VNAV all Cats visibility to $\frac{1}{2}$ SM and LNAV all Cats visibility to 1 SM.</p>			

ASOS 135.775	CHARLOTTE APP CON 120.05 307.8	CLNC DEL 132.55	UNICOM 122.7 (CTAF) 0
------------------------	--	---------------------------	---------------------------------



ELEV 683	TDZE 683
----------	----------



	FATED	JAMUN	WUVUL 1.6 NM to RW05	MOSEE
	2500	2500	1220	2500
	053°		0.9 NM to RW05	
	8 NM	4 NM	0.7 NM	0.9 NM
CATEGORY	A	B	C	D
LPV DA		933- $\frac{3}{4}$	250 (300- $\frac{3}{4}$)	
LNAV/VNAV DA		1001- $\frac{3}{4}$	318 (400- $\frac{3}{4}$)	
LNAV MDA		1020- $\frac{3}{4}$	337 (400- $\frac{3}{4}$)	
☑ CIRCLING	1220-1	537 (600-1)	1220-1 $\frac{1}{2}$ 537 (600-1 $\frac{1}{2}$)	1480-2 $\frac{1}{2}$ 797 (800-2 $\frac{1}{2}$)

SE-2, 20 FEB 2025 to 20 MAR 2025

SE-2, 20 FEB 2025 to 20 MAR 2025