

WAAS CH <b>86221</b> <b>W16A</b>	APP CRS <b>161°</b>	Rwy Idg TDZE Apt Elev	<b>7500</b> <b>4337</b> <b>4365</b>
--	------------------------	-----------------------------	---

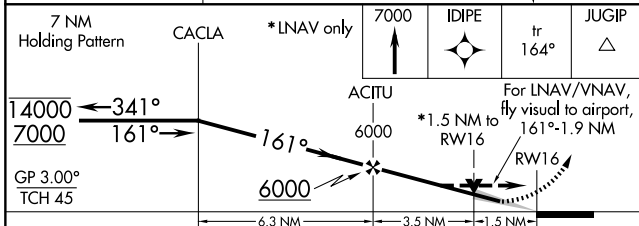
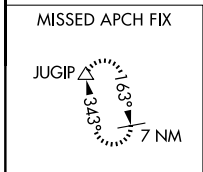
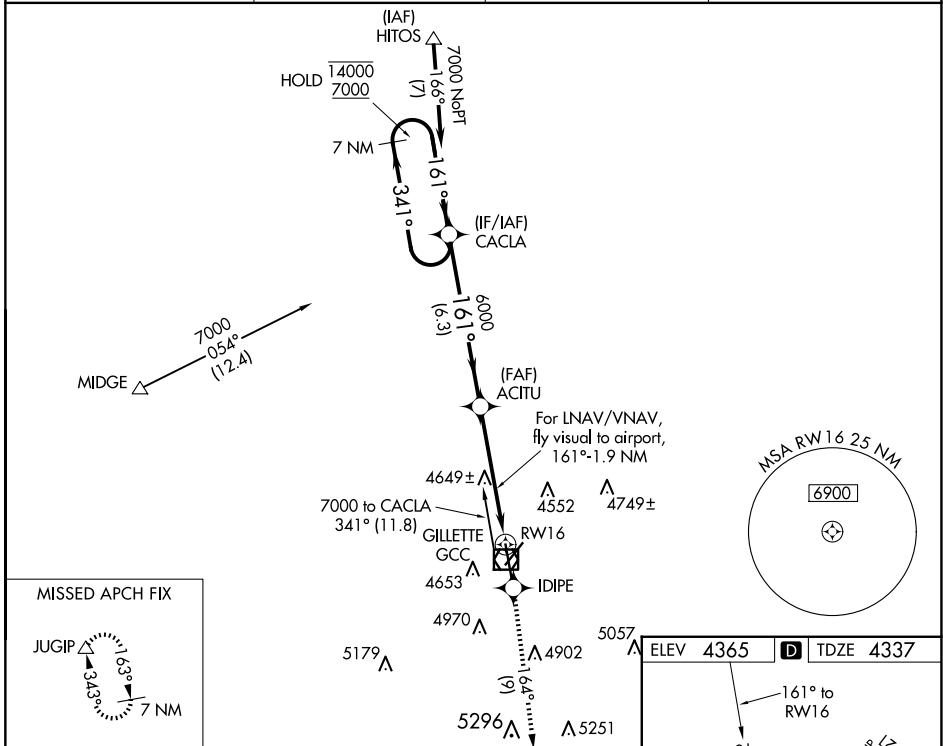
# RNAV (GPS) RWY 16

NORTHEAST WYOMING RGNL (GCC)

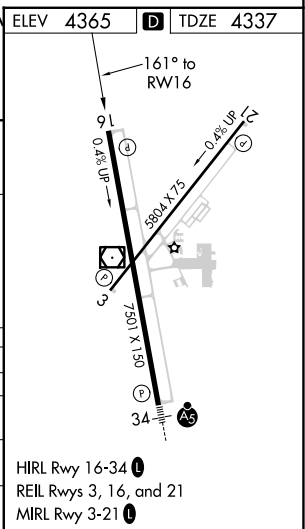
RNP APCH.  
 Circling Rwy 3 NA at night. For uncompensated Baro-VNAV systems, LNAV/VNAV NA below -23°C or above 54°C.

MISSED APPROACH: Climb to 7000 direct IDIPE and on track 164° to JUGIP and hold.

ASOS <b>124.175</b>	DENVER CENTER <b>135.6 363.025</b>	UNICOM <b>122.95</b>	CTAF <b>118.5</b>
------------------------	---------------------------------------	-------------------------	----------------------



CATEGORY	A	B	C	D
LPV DA		4660-1	323 (300-1)	
LNAV/VNAV DA		4980-1 7/8	643 (700-1 7/8)	
LNAV MDA	4900-1	563 (600-1)	4900-1 5/8	563 (600-1 5/8)
CIRCLING	5040-1 675 (700-1)	5240-1 1/4 875 (900-1 1/4)	5400-3	1035 (1100-3)



NW-1, 20 FEB 2025 to 20 MAR 2025

NW-1, 20 FEB 2025 to 20 MAR 2025