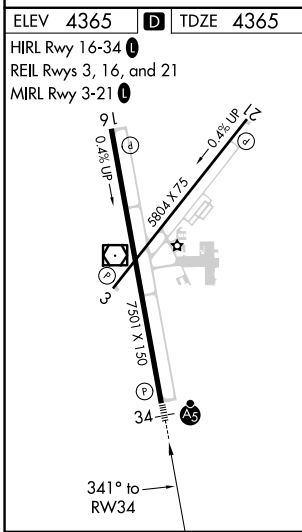
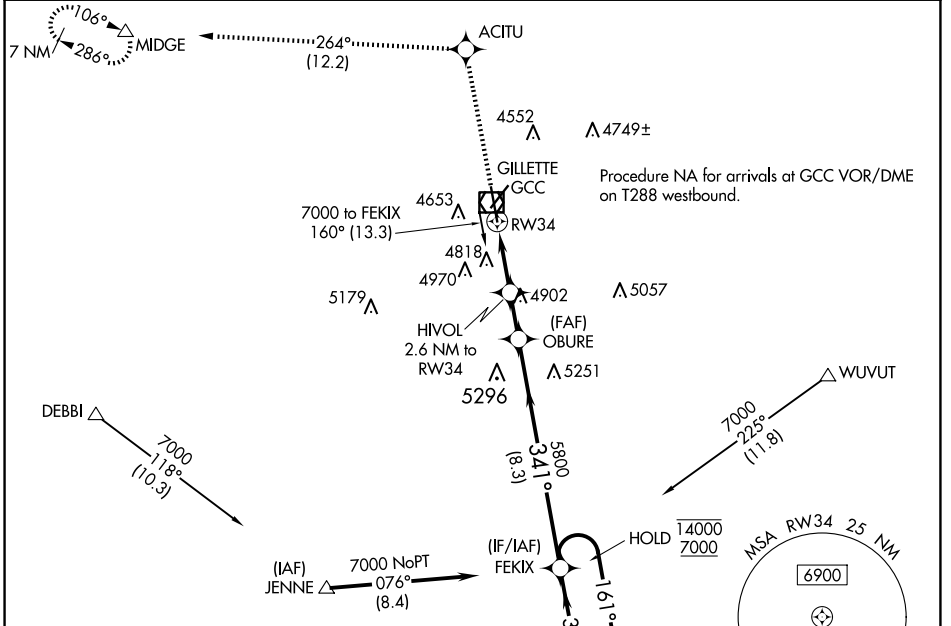


WAAS CH 86204 W34A	APP CRS 341°	Rwy Idg TDZE Apt Elev	7500 4365 4365
--	------------------------	-----------------------------	---

RNAV (GPS) RWY 34

NORTHEAST WYOMING RGNL (GCC)

RNP APCH.		MALSR	MISSED APPROACH: Climb to 7000 direct ACITU and on track 264° to MIDGE and hold.
<p>▼ Circling Rwy 3 NA at night. Inop table does not apply to LPV and LNAV/VNAV. For uncompensated Baro-VNAV systems, LNAV/VNAV NA below -23°C or above 54°C. For inop ALS, increase LNAV Cat A visibility to 1 SM, and Cat C/D to 2 SM. Rwy 34 helicopter visibility reduction below 3/4 SM NA.</p>			
ASOS 124.175	DENVER CENTER 135.6 363.025	UNICOM 122.95	CTAF 118.5



7000	ACITU	tr 264°	MIDGE	VGSI and RNAV glidepath not coincident. (VGSI Angle 3.20/TCH 56)	7 NM
					Holding Pattern
*LNAV only.		HIVOL 2.6 NM to RWY 34	OBURE	FEKIX	
		*2.1 NM to RWY 34	5800	161° → 14000	
			5240*	← 341° 7000	
				GP 3.00°	
				TCH 52	
2.1 NM	0.5	1.7 NM	8.3 NM		
CATEGORY	A	B	C	D	
LPV DA		4620-3/4	255 (300-3/4)		
LNAV/VNAV DA		5480-4	1115 (1200-4)		
LNAV MDA	5120-3/4	755 (800-3/4)	5120-13/4	755 (800-13/4)	
C CIRCLING	5120-1 755 (800-1)	5240-11/4 875 (900-11/4)	5400-3	1035 (1100-3)	

NW-1, 20 FEB 2025 to 20 MAR 2025

NW-1, 20 FEB 2025 to 20 MAR 2025