

VORTAC RZS <b>114.9</b> Chan <b>96</b>	APP CRS <b>097°</b>	Rwy Idg TDZE <b>674</b> Apt Elev <b>674</b>	<b>2803</b>
--	------------------------	---	-------------

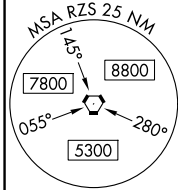
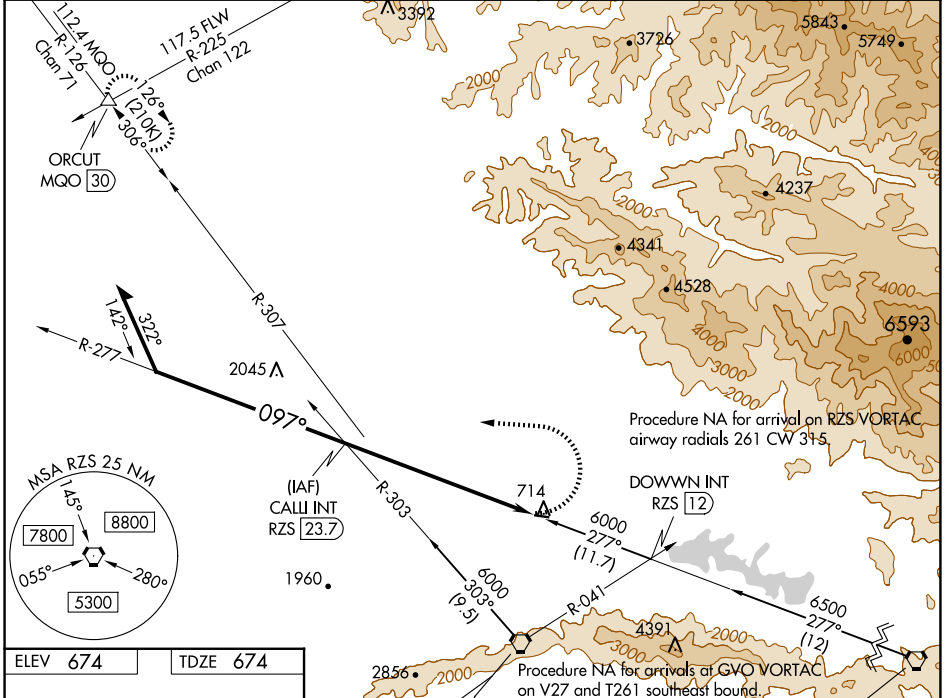
# VOR RWY 8

SANTA YNEZ/KUNKLE FLD (IZA)

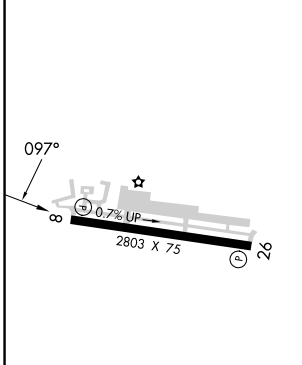
**⚠** Straight-in Rwy 8 NA at night. Circling Rwy 8 NA at night.  
**⚠** Rwy 8 helicopter visibility reduction below 1 SM NA.

MISSED APPROACH: Climbing left turn to 6000 on heading 285° and on GVO VORTAC R-307 and MQO VORTAC R-126 to ORCUT INT and hold.

AWOS-3PT <b>118.075</b>	SANTA BARBARA APP CON* <b>124.15 327.8</b>	UNICOM <b>122.8 (CTAF) 0</b>
----------------------------	---	---------------------------------



ELEV <b>674</b>	TDZE <b>674</b>
-----------------	-----------------

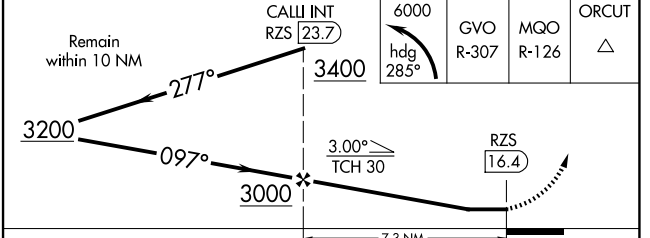


REIL Rws 8 and 26 **Ⓛ**  
MIRL Rwy 8-26 **Ⓛ**

FAF to MAP 7.3 NM

Knots	60	90	120	150	180
Min:Sec	7:18	4:52	3:39	2:55	2:26

GAVIOTA 113.8 GVO Chan 85	SAN MARCUS 114.9 RZS Chan 96
---------------------------------	------------------------------------



CATEGORY	A	B	C	D
S-8	2040-1¼ 1366 (1400-1¼)	2040-1½ 1366 (1400-1½)		NA
<b>Ⓛ</b> CIRCLING	2040-1¼ 1366 (1400-1¼)	2040-1½ 1366 (1400-1½)		NA

SW-3, 20 FEB 2025 to 20 MAR 2025

SW-3, 20 FEB 2025 to 20 MAR 2025