

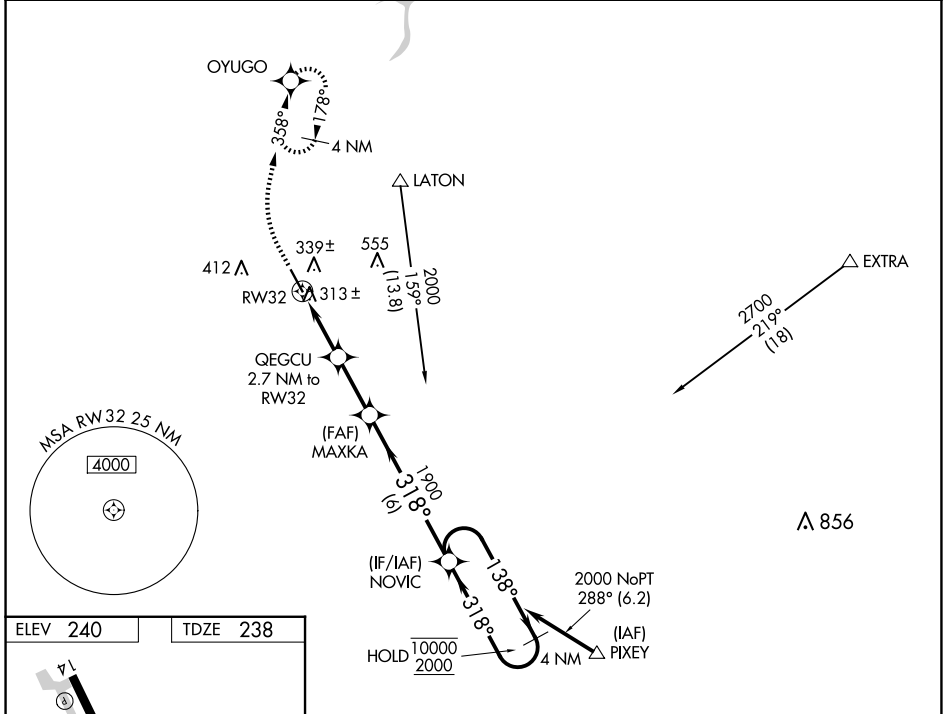
WAAS CH 70344 W32A	APP CRS 318°	Rwy Idg TDZE Apt Elev	5179 238 240
--	------------------------	-----------------------------	---

RNAV (GPS) RWY 32

HANFORD MUNI (HJO)

RNP APCH.	MISSED APPROACH: Climb to 700 then climbing right turn to 2000 direct OYUGO and hold, continue climb-in-hold to 2000.
▼ Rwy 32 helicopter visibility reduction below 3/4 SM NA. For uncompensated Baro-VNAV systems, LNAV/VNAV NA below -3°C or above 54°C.	

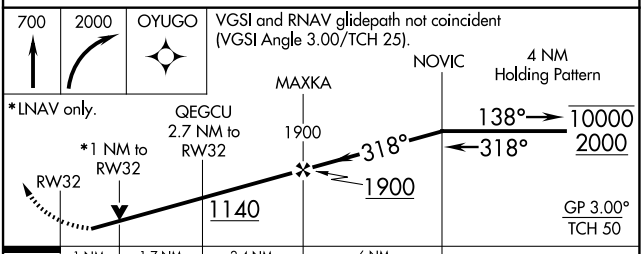
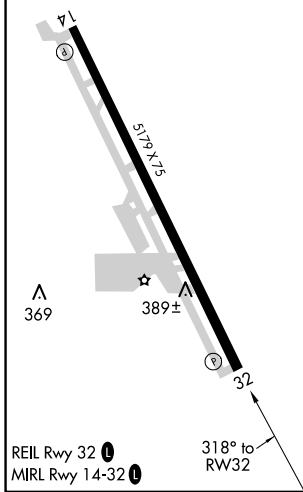
ASOS 134.75	FRESNO APP CON 123.9	CLNC DEL 123.9	UNICOM 122.8 (CTAF)
-----------------------	--------------------------------	--------------------------	-------------------------------



SW-2, 20 FEB 2025 to 20 MAR 2025

SW-2, 20 FEB 2025 to 20 MAR 2025

ELEV 240	TDZE 238
-----------------	-----------------



	1 NM	1.7 NM	2.4 NM	6 NM	
CATEGORY	A	B	C	D	
LPV DA		488-3/4	250 (300-3/4)		NA
LNAV/VNAV DA		488-3/4	250 (300-3/4)		NA
LNAV MDA	580-1	342 (400-1)		580-1 1/2	342 (400-1 1/2)