

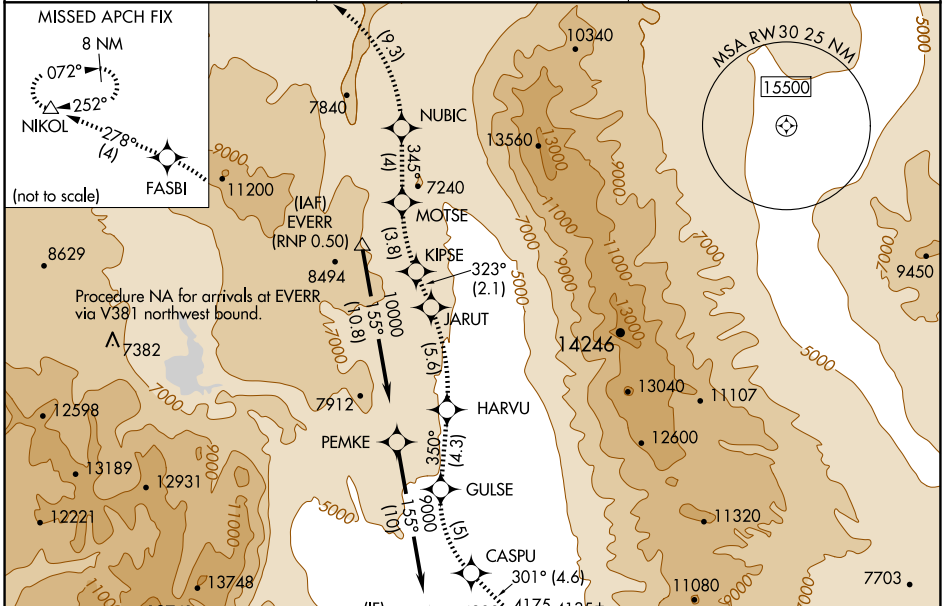
APP CRS	Rwy Idg	6743
301°	TDZE	4111
	Apt Elev	4124

RNAV (RNP) RWY 30

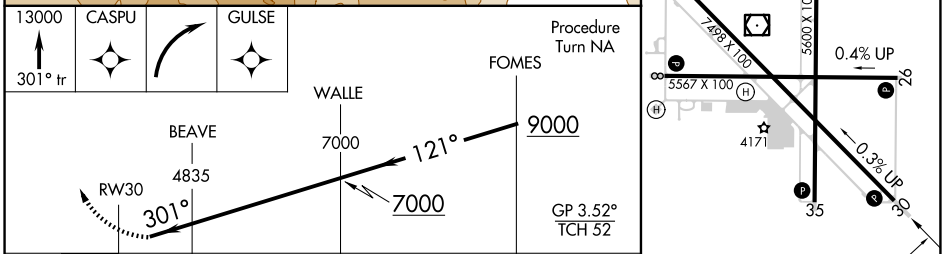
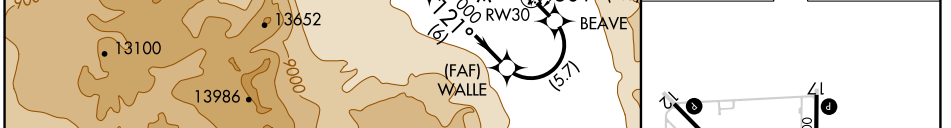
BISHOP (BIH)

RNP AR APCH, RF required.		<p>MISSED APPROACH: Climb to 13000 via 301° track to CASPU, right turn to GULSE, 350° track to HARVU, left turn to JARUT, 323° track to KIPSE, right turn to MOTSE, 345° track to NUBIC, left turn to FASBI, 278° track to NIKOL and hold.</p>
<p>NA</p> <p>For uncompensated Baro-VNAV systems, procedure NA below -12°C or above 54°C.</p>		

<p>ASOS</p> <p>119.025</p>	<p>OAKLAND CENTER</p> <p>125.75 284.65</p>	<p>UNICOM</p> <p>123.0 (CTAF)</p>
-----------------------------------	---	--



ELEV 4124	D	TDZE 4111
-----------	----------	-----------



CATEGORY	A	B	C	D
RNP 0.30 DA	4476-1	365 (400-1)		NA

AUTHORIZATION REQUIRED

MIRL Rwy 8-26, 12-30, and 17-35
REIL Rwy 12, 17, 30 and 35

SW-2, 20 FEB 2025 to 20 MAR 2025

SW-2, 20 FEB 2025 to 20 MAR 2025