

| | | |
|--|------------------------|--|
| WAAS CH 58035 W09A | APP CRS 095° | Rwy ldg 10499 TDZE 13 Apt Elev 13 |
|--|------------------------|--|

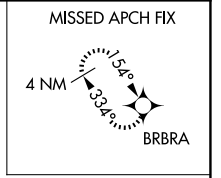
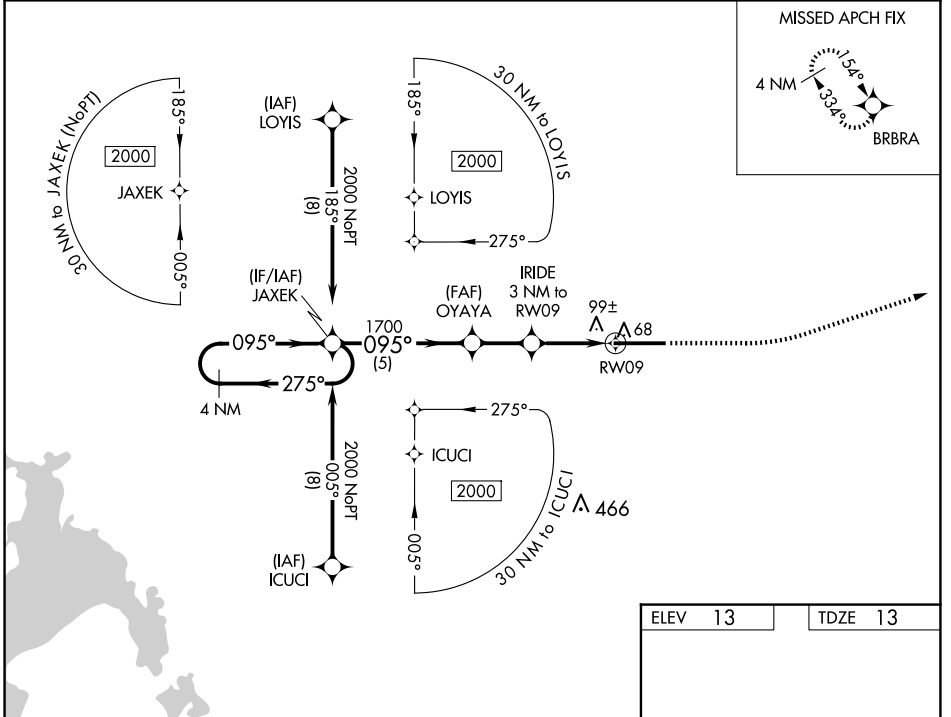
RNAV (GPS) RWY 9

DADE-COLLIER TRAINING AND TRANSITION (TNT)

△NA Baro-VNAV NA when using Miami Executive altimeter setting. For uncompensated Baro-VNAV systems, LNAV/VNAV NA below -15°C (5°F) or above 54°C (130°F). Rwy 9 helicopter visibility reduction below 1 SM NA. DME/DME RNP-0,3 NA. Procedure NA at night. When local altimeter setting not received, use Miami Executive altimeter setting and increase LPV DA to 279 feet; increase LNAV/VNAV DA to 346; and increase all MDA 80 feet; increase LNAV Cats C and D visibility 1/4 SM.

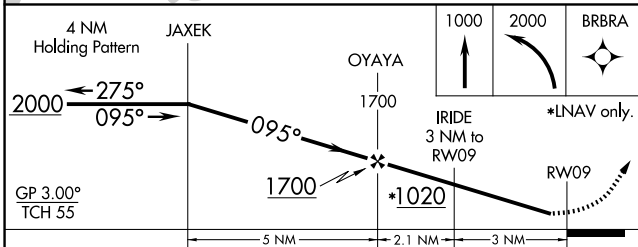
MISSED APPROACH: Climb to 1000 then climbing left turn to 2000 direct BRBRA and hold.

| | | |
|--------------------------|---------------------------------------|-------------------------------|
| AWOS-3 119.075 | MIAMI APP CON 128.6 306.975 | UNICOM 123.0 (CTAF) |
|--------------------------|---------------------------------------|-------------------------------|

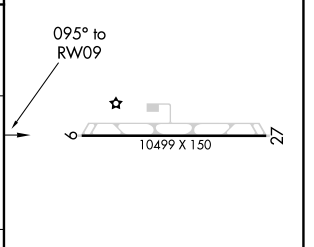


SE-3, 20 FEB 2025 to 20 MAR 2025

SE-3, 20 FEB 2025 to 20 MAR 2025



| | |
|---------|---------|
| ELEV 13 | TDZE 13 |
|---------|---------|



| CATEGORY | A | B | C | D |
|--------------|-------------|-------------|--------------|-------------|
| LPV DA | | 213-1 | 200 (200-1) | |
| LNAV/VNAV DA | | 280-1 | 267 (300-1) | |
| LNAV MDA | | 360-1 | 347 (400-1) | |
| CIRCLING | 400-1 | 480-1 | 480-1½ | 580-2 |
| | 387 (400-1) | 467 (500-1) | 467 (500-1½) | 567 (600-2) |

HIRL Rwy 9-27