

APP CRS 011°	Rwy Idg TDZE Apt Elev	N/A N/A 5
------------------------	-----------------------------	--------------------------------------

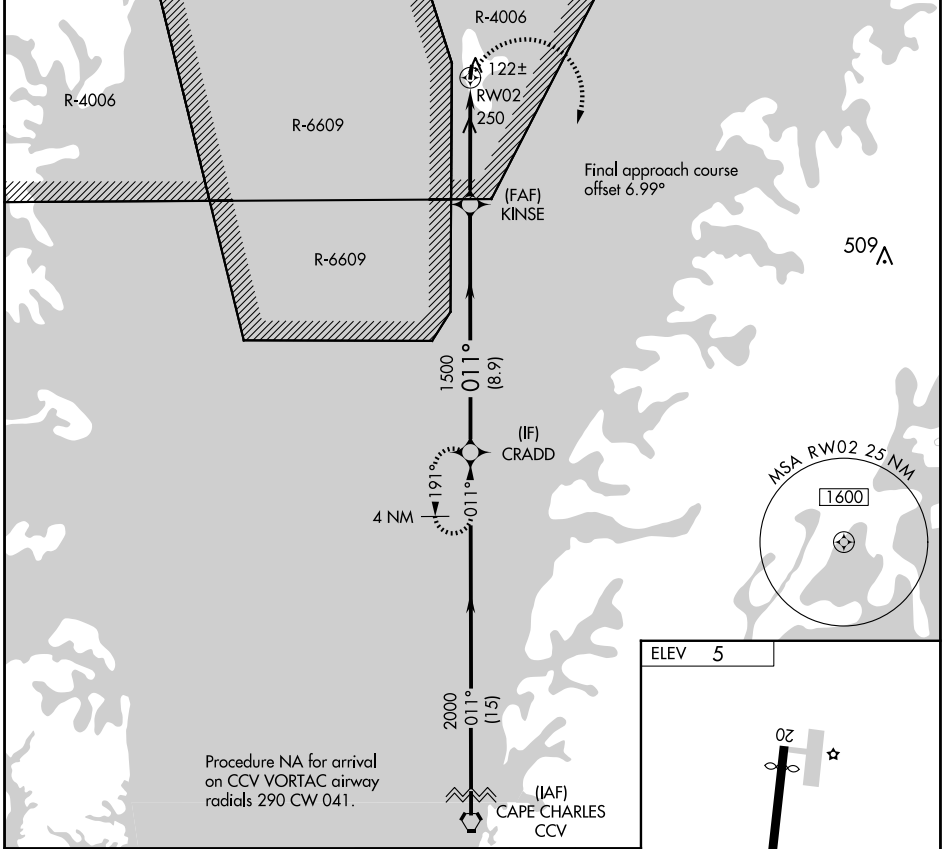
RNAV (GPS)-B

TANGIER ISLAND (TGI)

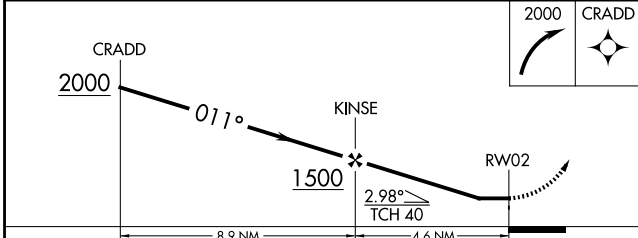
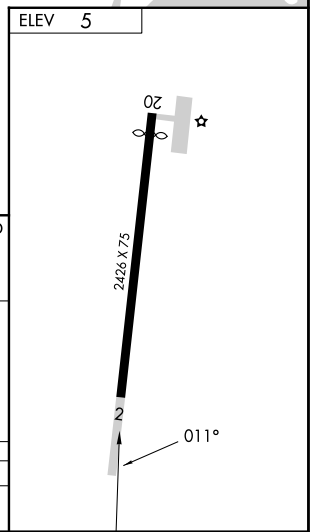
▼ DME/DME RNP-0.3 NA. When local altimeter setting not received, use Patuxent River NAS altimeter setting and increase all MDAs 100 feet. Specific clearance from Patuxent App Con required before proceeding northbound from CRADD. Approach is within R-6609 and underlies R-4006. Procedure NA at night.

MISSED APPROACH:
Climbing right turn to 2000
direct CRADD and hold.

AWOS-3 119.8	PATUXENT APP CON ★ 121.0 250.3	UNICOM 122.8 (CTAF)
------------------------	--	-------------------------------



Procedure NA for arrival on CCV VORTAC airway radials 290 CW 041.



CATEGORY	A	B	C	D
C CIRCLING	560-1	555 (600-1)	NA	

NE-3, 20 FEB 2025 to 20 MAR 2025

NE-3, 20 FEB 2025 to 20 MAR 2025