

LOC/DME I-RBW <b>110.15</b> Chan <b>38</b> (Y)	APP CRS <b>229°</b>	Rwy Idg <b>6002</b> TDZE <b>101</b> Apt Elev <b>101</b>
--	------------------------	---

# ILS Z or LOC Z RWY 23

LOWCOUNTRY RGNL (R.BW)

**▽** Inop table does not apply to S-LOC 23 Cat C. GPS and DME required. Helicopter visibility reduction below 3/4 SM NA. VDP NA with Charleston AFB/Intl altimeter setting. When local altimeter setting not received, use Charleston AFB/Intl altimeter setting; increase S-ILS 23 DA to 379 feet and all MDA 80 feet; increase S-LOC 23 Cats C/D visibility 1/8 mile and Circling Cat C visibility 1/2 mile and Circling Cat D visibility 1/4 mile. For inop ODALS when using Charleston AFB/Intl altimeter setting, increase S-ILS 23 all Cats visibility to 3/8 mile and S-LOC 23 Cat D visibility to 1 3/8 mile.

ODALS

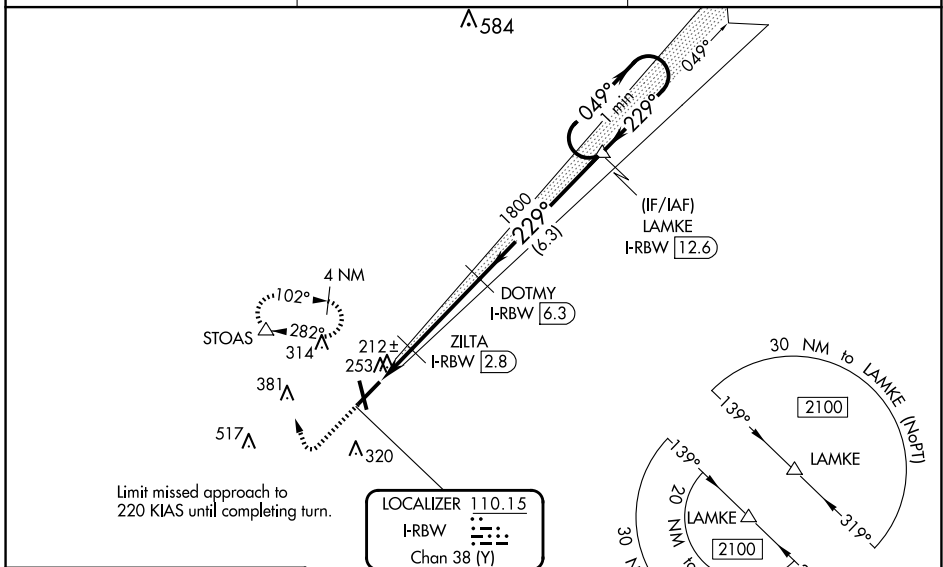


**MISSED APPROACH:**  
Climb to 1500 then climbing right turn to 2000 direct STOAS and hold.

AWOS-3PT  
**118.725**

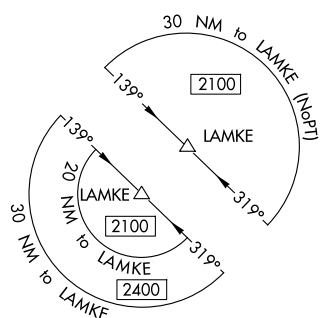
CHARLESTON APP CON  
**120.7 306.925**

UNICOM  
**122.8** (CTAF) **U**

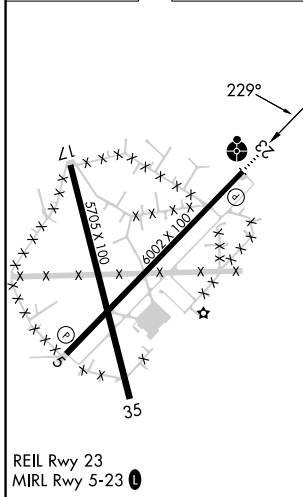


Limit missed approach to 220 KIAS until completing turn.

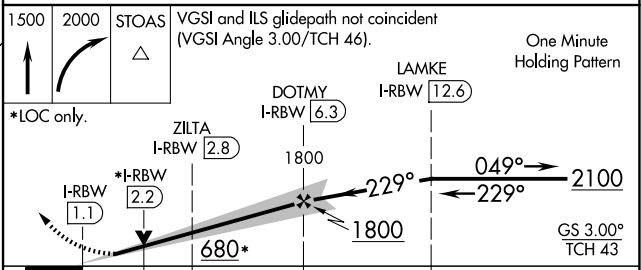
LOCALIZER 110.15  
I-RBW  
Chan 38 (Y)



ELEV	101	TDZE	101
------	-----	------	-----



REIL Rwy 23  
MIRL Rwy 5-23 **U**



CATEGORY	A	B	C	D
S-ILS 23	301-3/4 200 (200-3/4)			
S-LOC 23	480-3/4	379 (400-3/4)	480-1	379 (400-1)
<b>C</b> CIRCLING	620-1 519 (600-1)	640-1 539 (600-1)	700-1 1/2 599 (600-1 1/2)	700-2 599 (600-2)

SE-2, 20 FEB 2025 to 20 MAR 2025

SE-2, 20 FEB 2025 to 20 MAR 2025