


WAAS CH 61016 W23A	APP CRS 229°	Rwy Idg TDZE Apt Elev	6002 101 101
--	------------------------	-----------------------------	---

RNAV (GPS) RWY 23

LOWCOUNTRY RGNL (R.B.W)

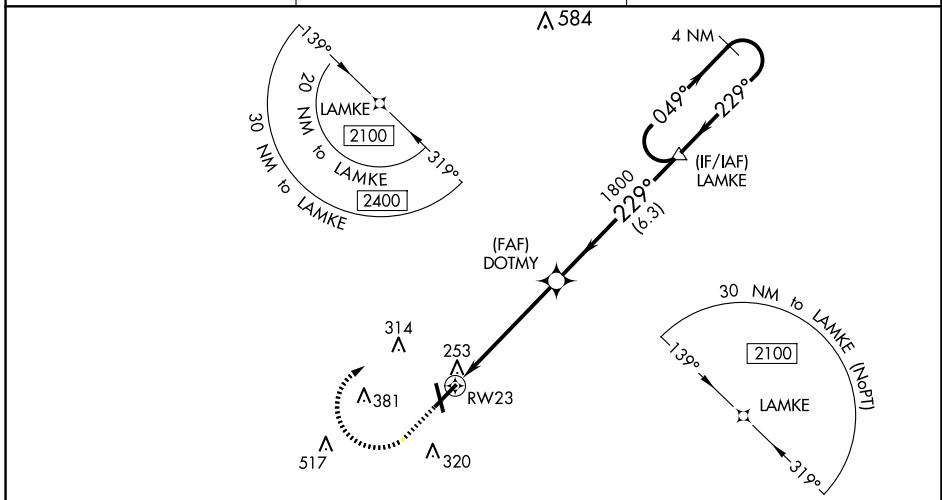
⚠ For uncompensated Baro-VNAV systems, LNAV/VNAV NA below -15°C (5°F) or above 54°C (130°F). Baro-VNAV and VDP NA when using Charleston AFB/Intl altimeter setting. DME/DME RNP-0.3 NA. Helicopter visibility reduction below 3/4 SM NA. For inop ODALS, increase LNAV/VNAV all Cats visibility to 1 1/4 mile and LNAV Cat D visibility to 1 1/2 mile. When local altimeter setting not received, use Charleston AFB/Intl altimeter setting; increase LPV DA to 379 feet and LNAV/VNAV DA to 542 feet and all MDA 80 feet; increase LNAV/VNAV visibility all Cats, LNAV Cats C/D visibility, and Circling Cat D visibility 1/4 mile; increase Circling Cat C visibility 1/2 mile. For inop ODALS when using Charleston AFB/Intl altimeter setting, increase LPV all Cats visibility to 7/8 mile and LNAV/VNAV all Cats and LNAV Cats C/D visibility to 1 1/2 mile.

ODALS

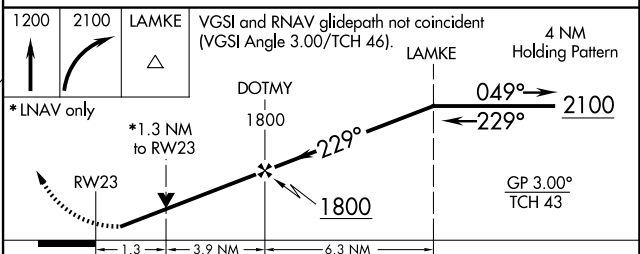
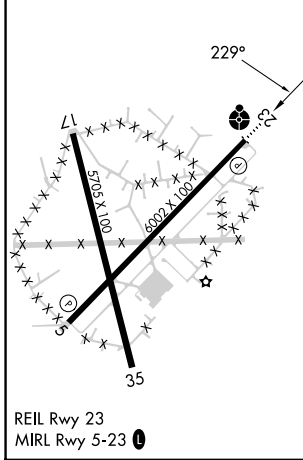



MISSED APPROACH: Climb to 1200 then climbing right turn to 2100 direct LAMKE and hold.

AWOS-3PT 118.725	CHARLESTON APP CON 120.7 306.925	UNICOM 122.8 (CTAF) 
----------------------------	--	---



ELEV	101	TDZE	101
------	-----	------	-----



CATEGORY	A	B	C	D
LPV DA		301-3/4	200 (200-3/4)	
LNAV/VNAV DA		464-1 1/8	363 (400-1 1/8)	
LNAV MDA	560-3/4	459 (500-3/4)	560-1 1/8	459 (500-1 1/8)
 CIRCLING	620-1 519 (600-1)	640-1 539 (600-1)	700-1 1/2 599 (600-1 1/2)	700-2 599 (600-2)

SE-2, 20 FEB 2025 to 20 MAR 2025

SE-2, 20 FEB 2025 to 20 MAR 2025