

WAAS CH <b>82232</b> <b>W05A</b>	APP CRS <b>049°</b>	Rwy Idg TDZE <b>96</b> Apt Elev <b>101</b>	<b>6002</b>
--	------------------------	--	-------------

# RNAV (GPS) RWY 5

LOWCOUNTRY RGNL (R.B.W)

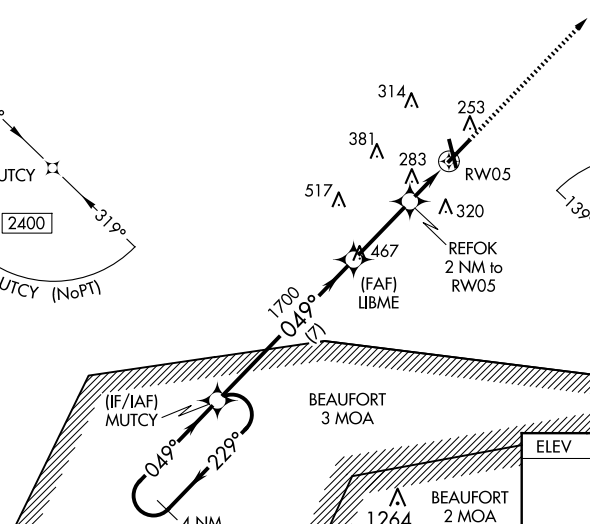
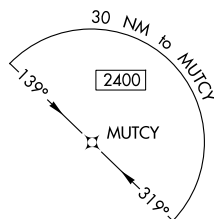
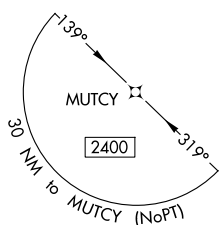
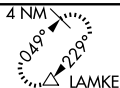
**⚠** For uncompensated Baro-VNAV systems, procedure NA below -15°C (5°F) or above 54°C (130°F).  
**⚠** DME/DME RNP-0.3 NA. VDP and Baro-VNAV NA when using Charleston AFB/Intl altimeter setting.  
 Helicopter visibility reduction below ¼ SM NA. When local altimeter setting not received, use Charleston AFB/Intl altimeter setting and increase all DA 78 feet and all MDA 80 feet; increase LPV, LNAV/VNAV all Cats and Circling Cat D visibility ¼ mile, increase LNAV Cat C - D visibility ½ mile, increase Circling Cat C visibility ½ mile.

**MISSED APPROACH:**  
 Climb to 2100 direct LAMKE and hold.

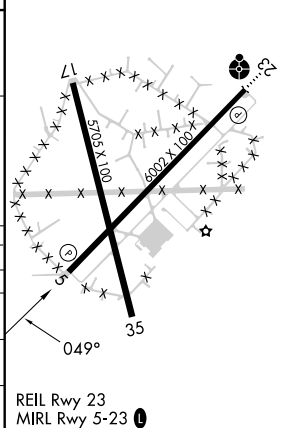
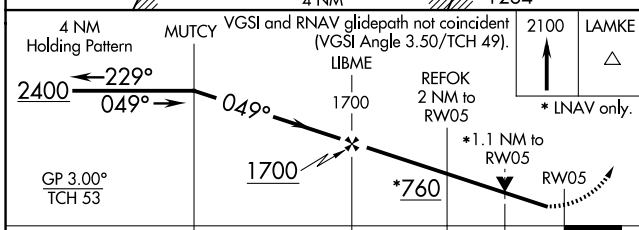
AWOS-3PT  
**118.725**

CHARLESTON APP CON  
**120.7 306.925**

UNICOM  
**122.8 (CTAF) 0**



ELEV	101	TDZE	96
------	-----	------	----



CATEGORY	A	B	C	D
LPV DA		431-1 1/8	335 (400-1 1/8)	
LNAV/VNAV DA		507-1 3/8	411 (500-1 3/8)	
LNAV MDA	540-1	444 (500-1)	540-1 3/8	444 (500-1 3/8)
CIRCLING	620-1 519 (600-1)	640-1 539 (600-1)	700-1 1/2 599 (600-1 1/2)	700-2 599 (600-2)

REIL Rwy 23  
 MIRL Rwy 5-23 0

SE-2, 20 FEB 2025 to 20 MAR 2025

SE-2, 20 FEB 2025 to 20 MAR 2025