

WAAS CH 93835 W22A	APP CRS 220°	Rwy ldg TDZE Apt Elev	5002 182 182
--	------------------------	-----------------------------	---

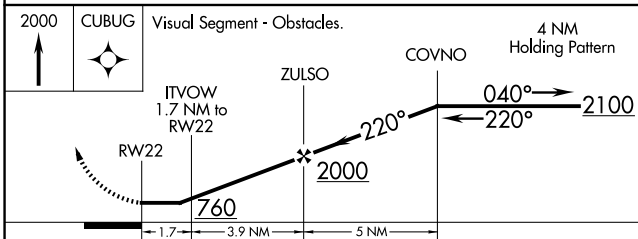
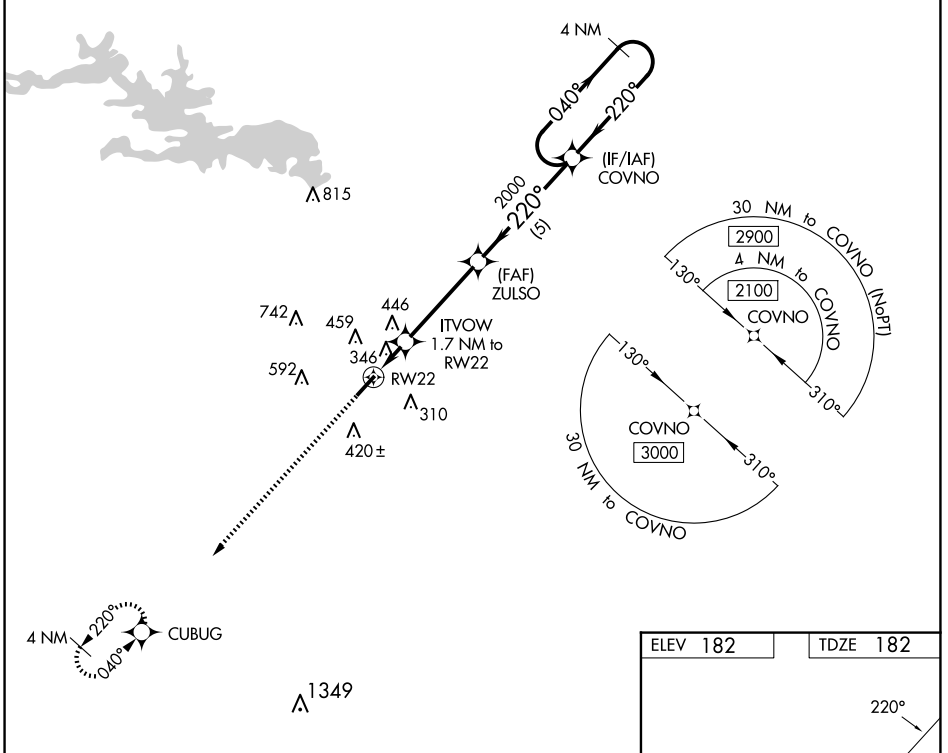
RNAV (GPS) RWY 22

DEXTER B FLORENCE MEML FLD (ADF)

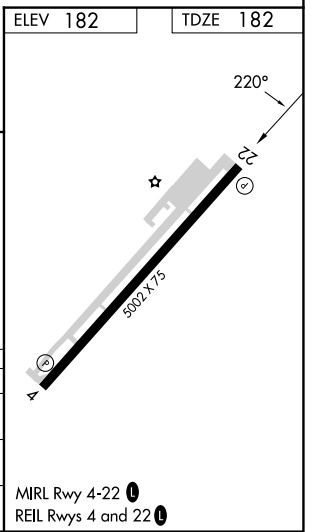
▽ DME/DME RNP-0.3 NA. When local altimeter setting not received, use Hot Springs altimeter setting and increase all MDAs 120 feet, and increase LP and LNAV Cat C visibility $\frac{3}{8}$ SM and Circling Cat C visibility $\frac{1}{2}$ mile. Night landing: Rwy 22 NA. Helicopter visibility reduction below 1 SM NA.

△ NA MISSED APPROACH: Climb to 2000 direct CUBUG and hold.

AWOS-3PT 118.175	MEMPHIS CENTER 128.475 377.15	UNICOM 122.7 (CTAF) 0
----------------------------	---	---------------------------------



CATEGORY	A	B	C	D
LP MDA	600-1	418 (500-1)	600-1 $\frac{3}{8}$ 418 (500-1 $\frac{3}{8}$)	NA
LNAV MDA	680-1	498 (500-1)	680-1 $\frac{3}{8}$ 498 (500-1 $\frac{3}{8}$)	NA
C CIRCLING	760-1 578 (600-1)	800-1 618 (700-1)	1040-2 $\frac{1}{2}$ 858 (900-2 $\frac{1}{2}$)	NA



SC-1, 20 FEB 2025 to 20 MAR 2025

SC-1, 20 FEB 2025 to 20 MAR 2025