

APP CRS	Rwy Idg	5158
036°	TDZE	700
	Apt Elev	717

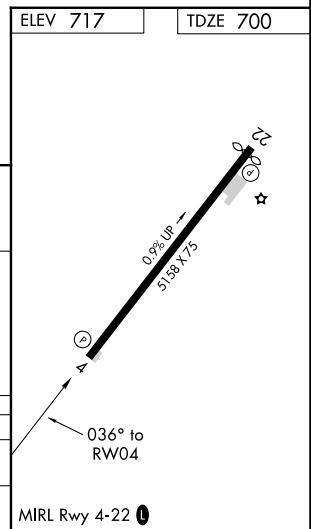
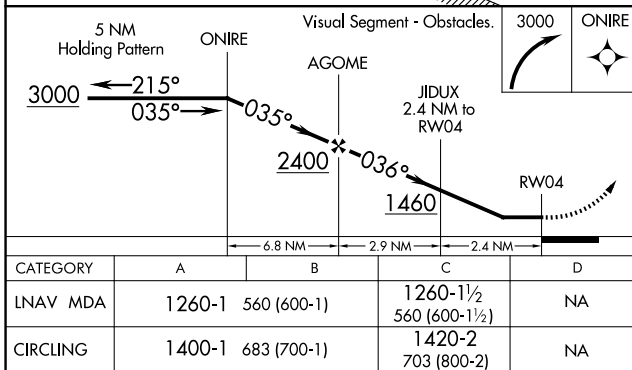
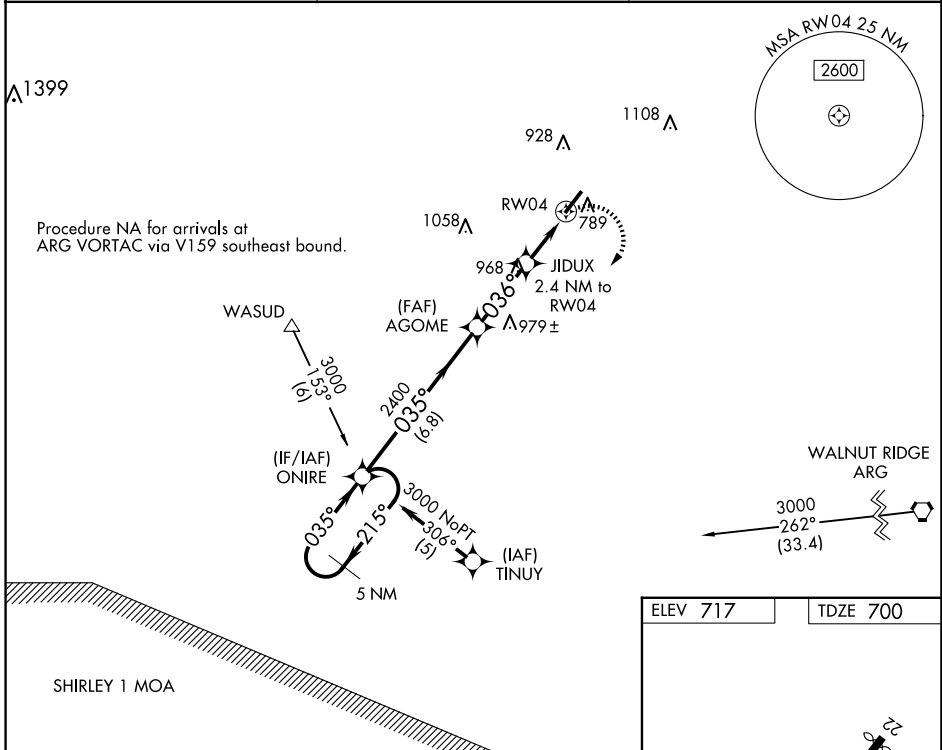
RNAV (GPS) RWY 4

SHARP COUNTY RGNL (CVK)

RNP APCH.	<p>▽ Use Walnut Ridge altimeter setting; when not received, use Jonesboro Municipal altimeter setting and increase all MDAs 60 feet and Circling Cat C visibility ¼ SM. Rwy 4 helicopter visibility reduction below 1 SM NA. Straight-in Rwy 4 NA at night, Circling Rwy 4 NA at night.</p>
<p>△ NA</p>	

MISSED APPROACH: Climbing right turn to 3000 direct ONIRE and hold.

ARG AWOS-3PT 126.525	MEMPHIS CENTER 120.075 289.4	UNICOM 122.7 (CTAF) 0
--------------------------------	--	---------------------------------



SC-1, 20 FEB 2025 to 20 MAR 2025

SC-1, 20 FEB 2025 to 20 MAR 2025