

VOR/DME SCB	APP CRS	Rwy Idg	4650
111.0	147°	TDZE	1204
Chan 47		Apt Elev	1204

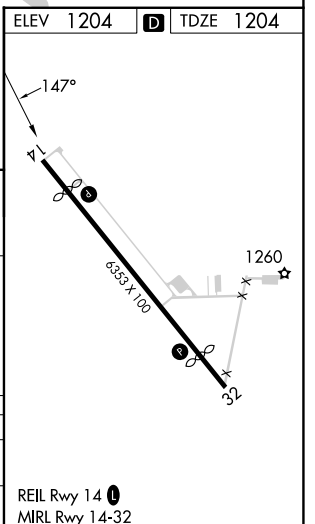
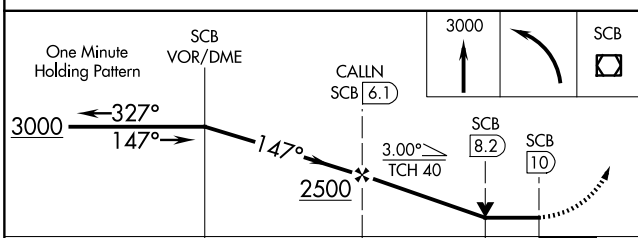
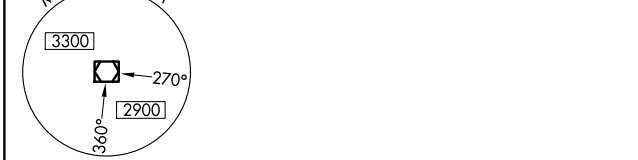
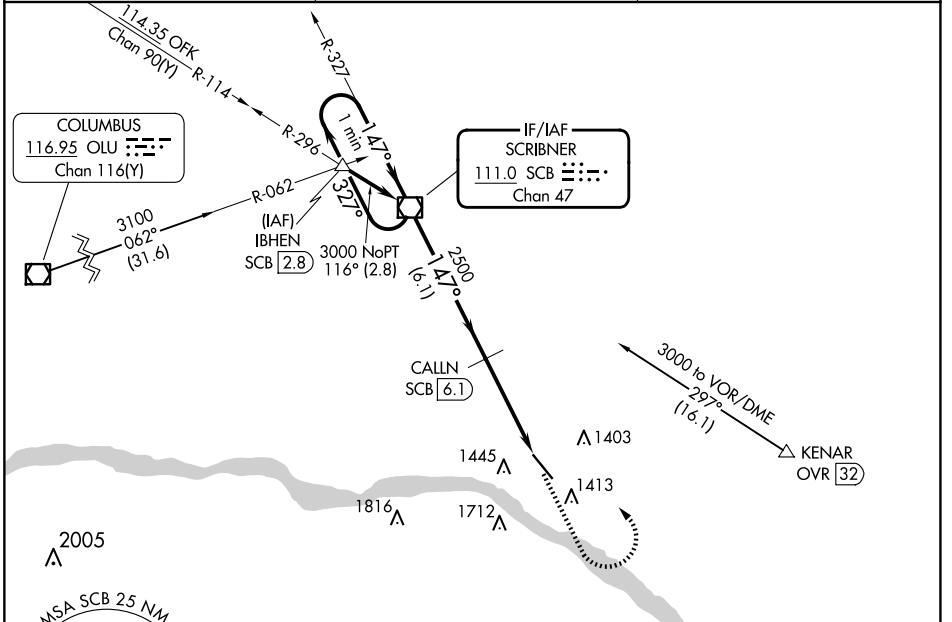
VOR RWY 14

FREMONT MUNI (F/E/T)

V VDP NA with Blair altimeter setting. Rwy 14 helicopter visibility reduction below 1 SM NA. When local altimeter setting not received, use Blair altimeter setting and increase all MDA 60 feet; increase S-14 Cat C visibility 1/8 mile. DME required.

NA MISSED APPROACH: Climb to 3000 then left turn direct SCB VOR/DME and hold.

AWOS-3 121.275	OMAHA APP CON 135.875 354.05	UNICOM 122.8 (CTAF) 0
--------------------------	--	---------------------------------



CATEGORY	A	B	C	D
S-14	1820-1	616 (700-1)	1820-1 3/4 616 (700-1 3/4)	NA
C CIRCLING	1820-1	616 (700-1)	2020-2 1/2 816 (900-2 1/2)	NA

NC-2, 20 FEB 2025 to 20 MAR 2025

NC-2, 20 FEB 2025 to 20 MAR 2025