

| | | | |
|--|------------------------|-----------------------------|---------------------------------------|
| WAAS CH 56612 W18B | APP CRS 181° | Rwy Idg TDZE Apt Elev | 6930 32 34 |
|--|------------------------|-----------------------------|---------------------------------------|

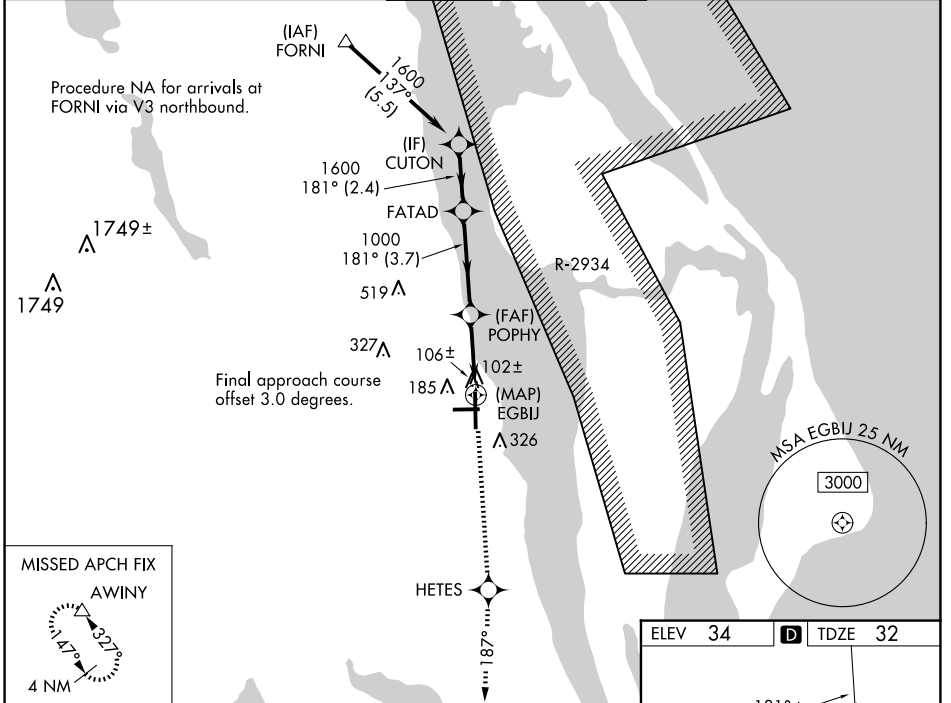
RNAV (GPS) Z RWY 18

SPACE COAST RGNL (TIX)

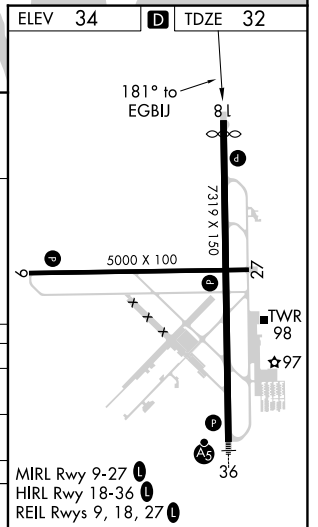
▼ Baro-VNAV NA when using Melbourne altimeter setting. For uncompensated Baro-VNAV systems, LNAV/VNAV NA below -15°C (5°F) or above 47°C (116°F). DME/DME RNP-0.3 NA. Visibility reduction by helicopters NA. When control tower closed, use Melbourne altimeter setting.

MISSED APPROACH: Climb to 3000 direct HETES and via track 187° to AWINY and hold.

| | | | | |
|------------------------|--|--|--------------------------|-------------------------|
| ATIS 120.625 | ORLANDO APP CON 134.95 281.425 | SPACE COAST TOWER ★ 118.9 (CTAF) | GND CON 121.85 | UNICOM 122.95 |
|------------------------|--|--|--------------------------|-------------------------|



| | | | | |
|--|--------|--------|--------------|-------|
| VGSi and RNAV glidepath not coincident (VGSi Angle 3.00/TCH 44). | | 3000 | HETES | AWINY |
| Procedure | CUTON | FATAD | POPHY | EGJUI |
| Turn | NA | NA | tr 187° | △ |
| GP 3.00° | 1600 | 1600 | 1000 | |
| TCH 50 | 181° | 181° | 187° | |
| | 2.4 NM | 3.7 NM | 2.9 NM | |
| CATEGORY | A | B | C | D |
| LPV DA | | 332-1 | 300 (300-1) | |
| LNAV/VNAV DA | | 377-1¼ | 345 (400-1¼) | |
| MELBOURNE ALTIMETER SETTING MINIMUMS | | | | |
| LNAV/VNAV DA | | 437-1½ | 405 (500-1½) | |



SE-3, 20 FEB 2025 to 20 MAR 2025

SE-3, 20 FEB 2025 to 20 MAR 2025