

APP CRS	Rwy Idg	4100
150°	TDZE	1231
	Apt Elev	1231

RNAV (GPS) RWY 15

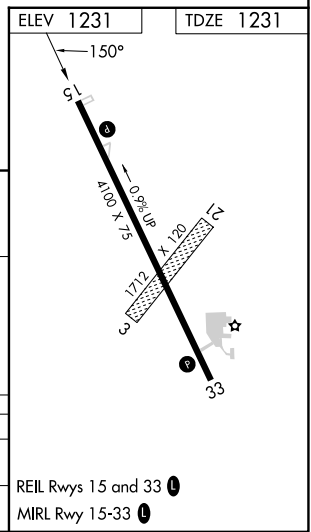
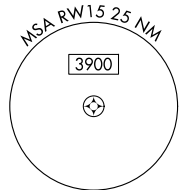
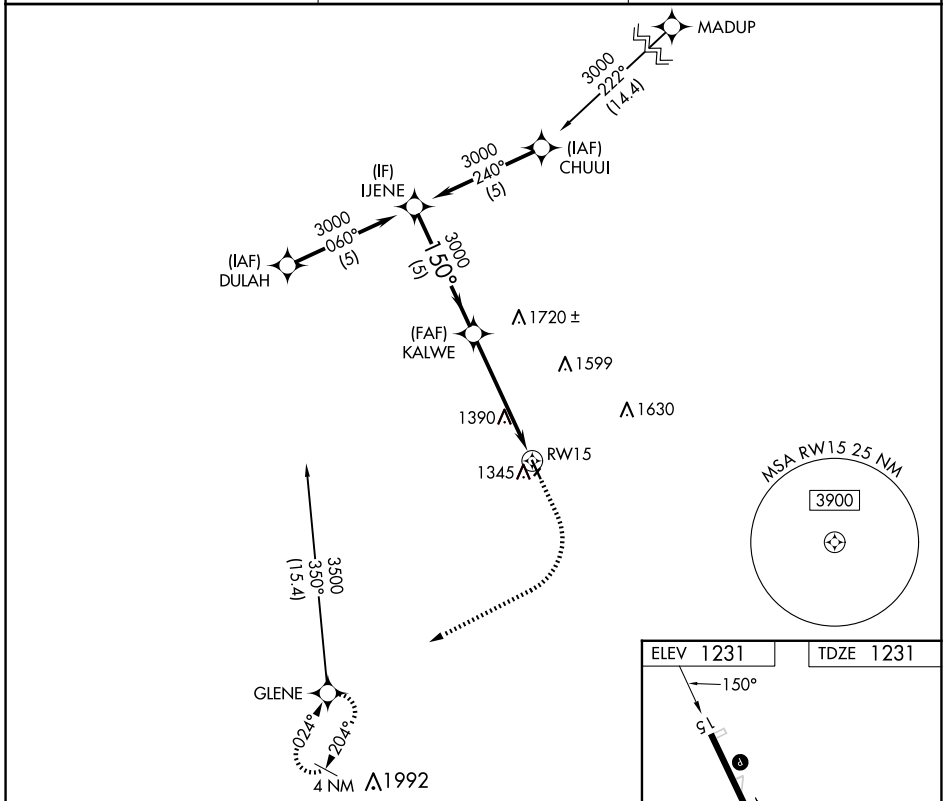
HARLAN MUNI (HNR)

RNP APCH - GPS.

NA Circling NA to Rwys 3 and 21. Procedure NA at night.
NA Rwy 15 helicopter visibility reduction below 1 SM NA.

MISSED APPROACH: Climb to 2000, then climbing right turn to 3600 direct GLENE and hold.

AWOS-3 118.325	OMAHA APP CON 124.5 263.0	UNICOM 122.8 (CTAF) 0
--------------------------	-------------------------------------	---------------------------------



VGSI and descent angles not coincident (VGSI Angle 3.00/TCH 40).

	2000	3600	GLENE
	↑	↷	✦

IJENE	KALWE	RW15
3000	3000	
150°		3.27°
5 NM		TCH 35
5 NM		

CATEGORY	A	B	C	D
LNAV MDA	1860-1	629 (700-1)		NA
CIRCLING	1860-1	629 (700-1)		NA

NC-3, 20 FEB 2025 to 20 MAR 2025

NC-3, 20 FEB 2025 to 20 MAR 2025