

APP CRS	Rwy Idg	3556
271°	TDZE	1183
	Apt Elev	1190

RNAV (GPS) RWY 27

MEDINA MUNI (1G5)

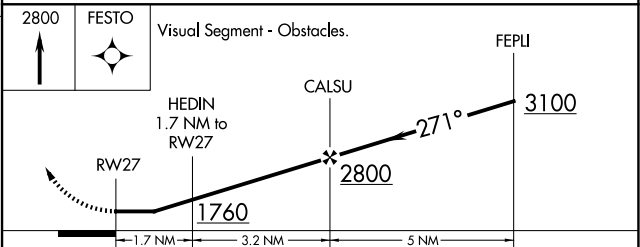
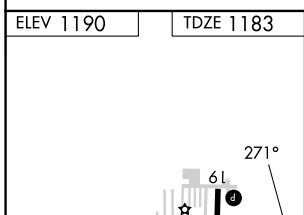
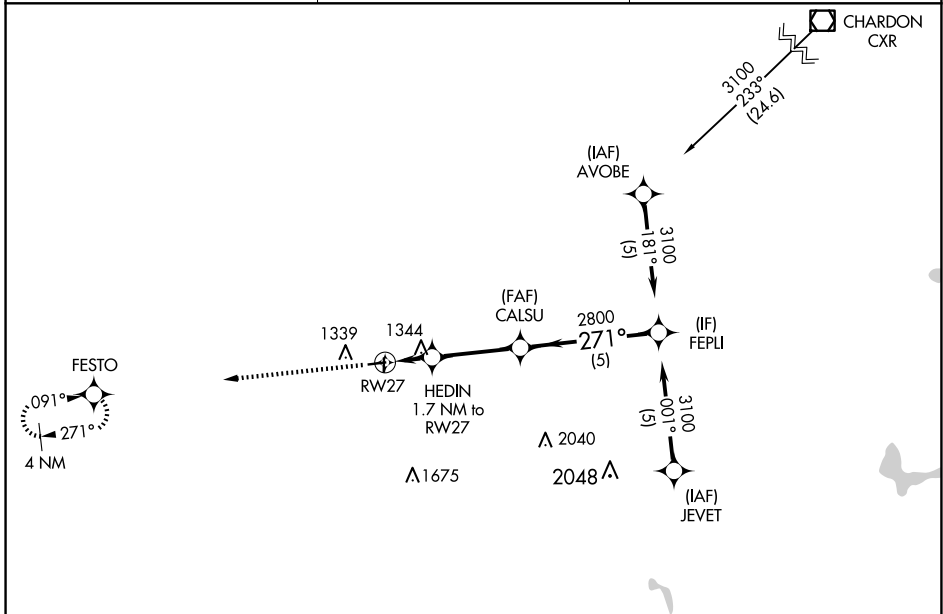
RNP APCH.
 ▼ Rwy 27 helicopter visibility reduction below 3/4 SM NA.
 ▲ NA Use Cleveland-Hopkins Intl altimeter setting.

MISSED APPROACH: Climb to 2800 direct FESTO and hold.

CLE ASOS
127.85

CLEVELAND APP CON
125.35 346.325

UNICOM
123.0 (CTAF) 0



REIL Rwy 27 0	MIRL Rwy 9-27 and 1-19 0			
CATEGORY	A	B	C	D
RNAV MDA	1700-1	517 (600-1)	1700-1 3/8 517 (600-1 3/8)	NA

EC-2, 20 FEB 2025 to 20 MAR 2025

EC-2, 20 FEB 2025 to 20 MAR 2025