

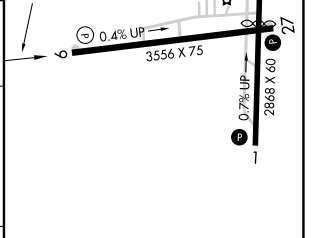
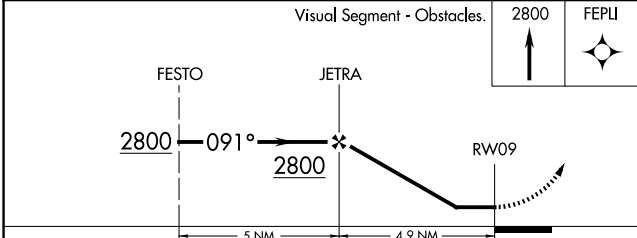
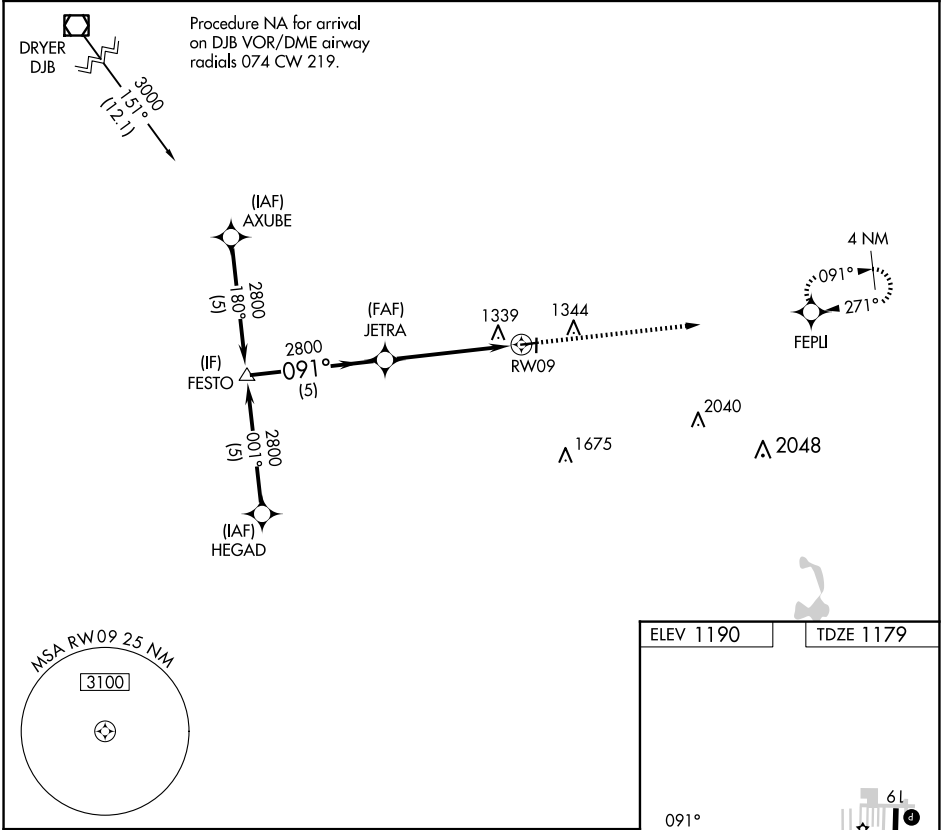
APP CRS	Rwy Idg	3556
091°	TDZE	1179
	Apt Elev	1190

RNAV (GPS) RWY 9

MEDINA MUNI (1G5)

RNP APCH.	<p>Procedure NA at night.</p> <p>NA Rwy 9 helicopter visibility reduction below 1 SM NA. Use Cleveland-Hopkins Intl altimeter setting.</p>	MISSED APPROACH: Climb to 2800 direct FEPLI and hold.
-----------	--	---

CLE ASOS 127.85	CLEVELAND APP CON 125.35 346.325	UNICOM 123.0 (CTAF) 0
---------------------------	--	---------------------------------



CATEGORY	A	B	C	D
LNAV MDA	1700-1	521 (600-1)	1700-1½ 521 (600-1½)	NA

REIL Rwy 27 0

MIRL Rwy 9-27 and 1-19 0

EC-2, 20 FEB 2025 to 20 MAR 2025

EC-2, 20 FEB 2025 to 20 MAR 2025