

APP CRS	Rwy Idg	<b>3110</b>
<b>211°</b>	TDZE	<b>268</b>
	Apt Elev	<b>280</b>

# RNAV (GPS) RWY 21

MINUTE MAN AIR FLD (6B6)

RNP APCH - GPS.

▼ Circling NA to Rws 12 and 30. Rwy 21 helicopter visibility reduction below 3/4 SM NA.  
 ▲ NA Circling Rwy 3 NA at night. Use Bedford altimeter setting, when not received, use Boston altimeter setting and increase all MDAs 60 feet and visibility Cat B 1/4 SM.

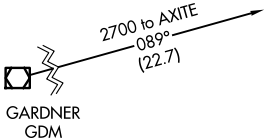
MISSED APPROACH:  
 Climbing right turn to 2000 direct ERIGY and hold.

BOSTON APP CON  
**124.4 279.6**

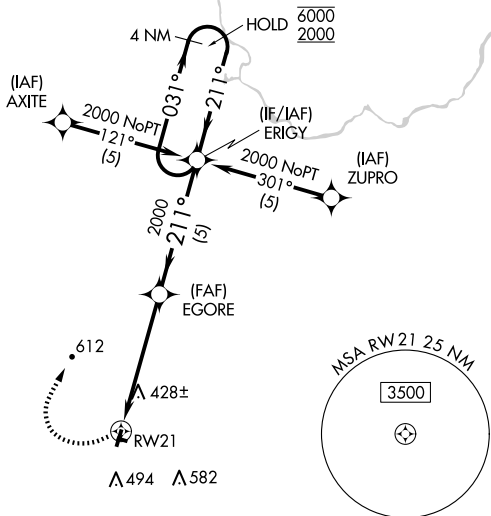
UNICOM  
**122.8 (CTAF)**

▲ 2370

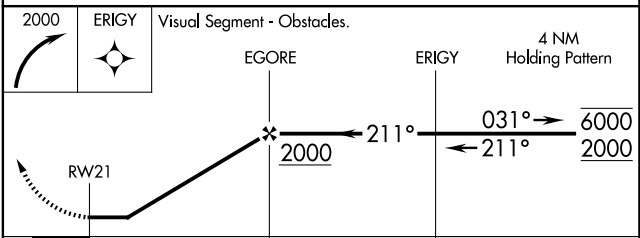
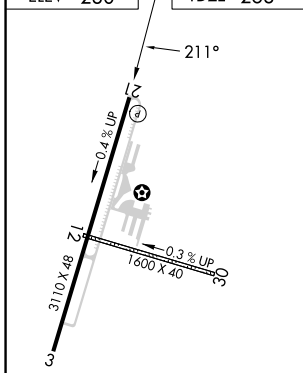
Procedure NA for arrival on GDM VOR/DME airway radials 071 CW 111.



R-4102 A & B



ELEV 280	TDZE 268
----------	----------



REIL Rwy 21  
 LRL Rwy 3-21

CATEGORY	A	B	C	D
LNAV MDA	960-1	692 (700-1)	NA	
CIRCLING	960-1 680 (700-1)	1020-1 740 (800-1)	NA	

NE-1, 20 FEB 2025 to 20 MAR 2025

NE-1, 20 FEB 2025 to 20 MAR 2025