

WAAS CH <b>66028</b> <b>W27A</b>	APP CRS <b>274°</b>	Rwy Idg <b>3882</b> TDZE <b>777</b> Apt Elev <b>781</b>
--	------------------------	---

# RNAV (GPS) RWY 27

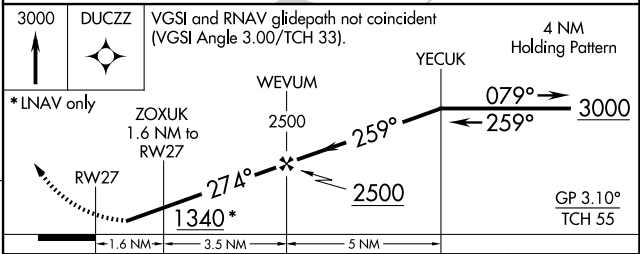
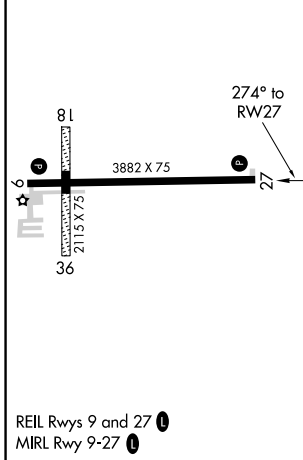
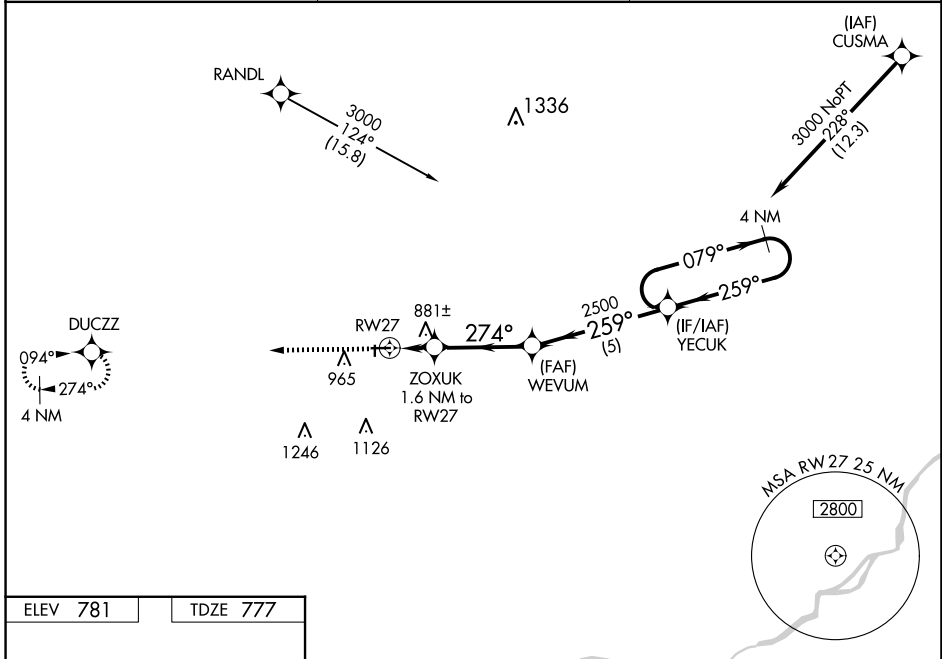
FULTON COUNTY (USE)

RNP APCH - GPS.

▼ For uncompensated Baro-VNAV systems, LNAV/VNAV NA below -16°C or above 54°C. Circling NA to Rwy 18 and 36. Rwy 27 helicopter visibility reduction below 1 SM NA. Procedure NA at night.

MISSED APPROACH:  
Climb to 3000 direct DUCZZ and hold.

AWOS-3P <b>127.375</b>	TOLEDO APP CON <b>134.35 317.55</b>	UNICOM <b>123.0 (CTAF)</b>
---------------------------	--	-------------------------------



CATEGORY	A	B	C	D
LPV DA		1092-1	315 (400-1)	
LNAV/VNAV DA		1095-1	318 (400-1)	
LNAV MDA	1180-1	403 (400-1)	1180-1½	403 (400-1½)
CIRCLING	1320-1	539 (600-1)	1480-2 699 (700-2)	1480-2¼ 699 (700-2¼)

EC-2, 20 FEB 2025 to 20 MAR 2025

EC-2, 20 FEB 2025 to 20 MAR 2025