

WAAS CH <b>58212</b> <b>W01A</b>	APP CRS <b>009°</b>	Rwy Idg <b>5002</b> TDZE <b>473</b> Apt Elev <b>473</b>
--	------------------------	---

# RNAV (GPS) RWY 1

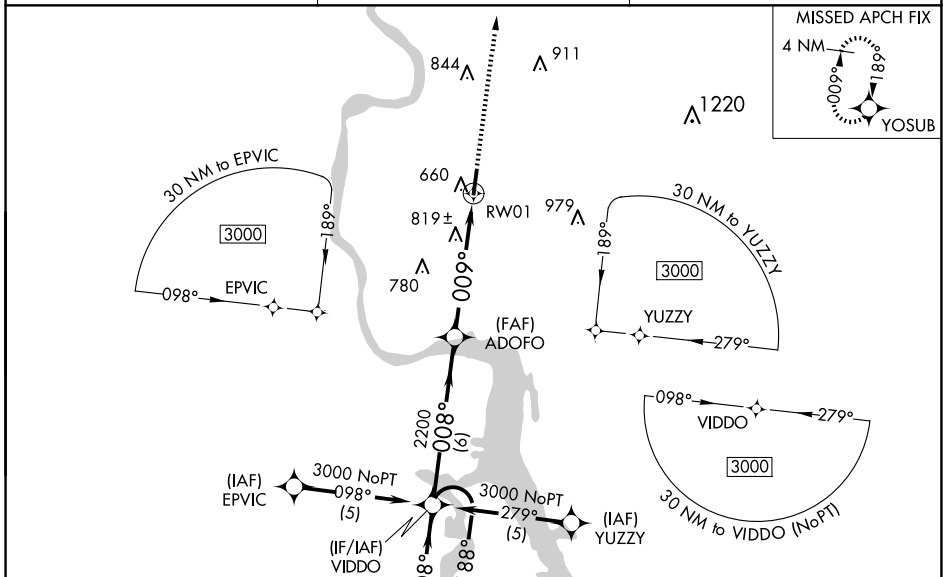
SAVANNAH-HARDIN COUNTY (SNH)

RNP APCH - GPS.

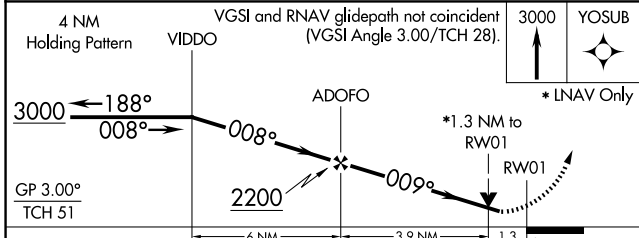
Baro-VNAV NA when using Muscle Shoals altimeter setting. For uncompensated Baro-VNAV systems, LNAV/VNAV NA below -15°C or above 54°C. Rwy 1 helicopter visibility reduction below ¾ SM NA. When local altimeter setting not received, use Muscle Shoals, AL altimeter setting and increase all DA 102 feet and all MDA 120 feet and increase LPV and LNAV/VNAV all Cats visibility ½ mile, LNAV Cat C visibility ¼ mile, Circling Cat B visibility ¼ mile and Circling Cat C visibility ½ mile. VDP NA when use Muscle Shoals altimeter setting.

**MISSED APPROACH:**  
Climb to 3000 direct YOSUB and hold.

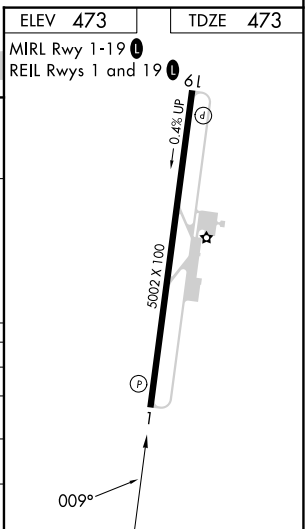
AWOS-3 <b>133.925</b>	MEMPHIS CENTER <b>124.35 318.1</b>	CTAF <b>122.8</b>
--------------------------	---------------------------------------	----------------------



ELEV <b>473</b>	TDZE <b>473</b>
MIRL Rwy 1-19	REIL Rwy 1 and 19



CATEGORY	A	B	C	D
LPV DA	845-1¼	372 (400-1¼)		NA
LNAV/VNAV DA	1188-2½	715 (800-2½)		NA
LNAV MDA	1080-1	607 (700-1)	1080-1¾ 607 (700-1¾)	NA
CIRCLING	1100-1	627 (700-1)	1140-1¾ 667 (700-1¾)	NA



SE-1, 20 FEB 2025 to 20 MAR 2025

SE-1, 20 FEB 2025 to 20 MAR 2025