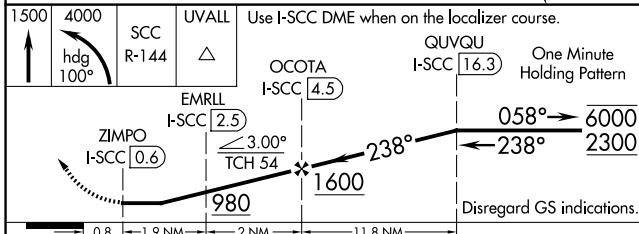
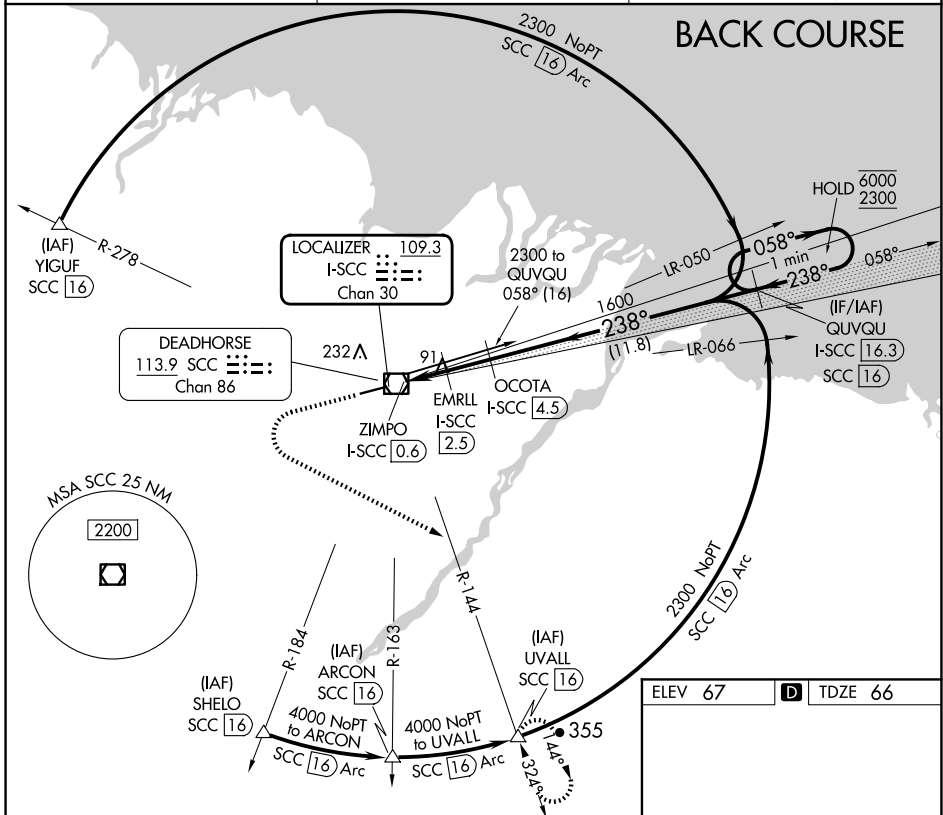


LOC/DME I-SCC <b>109.3</b> Chan 30	APP CRS <b>238°</b>	Rwy Idg TDZE Apt Elev	<b>6500</b> <b>66</b> <b>67</b>
--	------------------------	-----------------------------	---------------------------------------

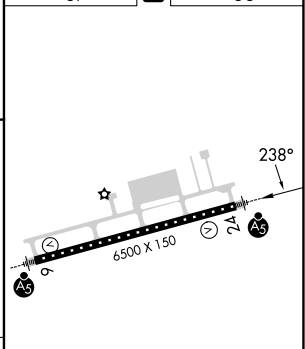
# LOC BC RWY 24 DEADHORSE (SCC) (PASC)

DME required.	MALSR	MISSED APPROACH: Climb to 1500 then climbing left turn to 4000 on heading 100° and SCC VOR/DME R-144 to UVALL/SCC VOR/DME 16 DME and hold.
<p>▼ For inop ALS, increase *S-LOC 24 Cat E visibility to RVR 5000 and S-LOC 24 Cat C/D/E visibility to RVR 5500.</p>		*Missed approach requires minimum climb of 243 feet per NM to 780.

AFIS <b>118.4</b>	ANCHORAGE CENTER <b>134.4 370.9</b>	DEADHORSE RADIO <b>123.6 (CTAF) 0</b>
----------------------	--	--



ELEV 67	TDZE 66
---------	---------



CATEGORY	A	B	C	D	E
S-LOC 24*	360/24 294 (300-½)				
S-LOC 24	420/24	354 (400-½)	420/30	354 (400-¾)	
☐ CIRCLING	540-1	473 (500-1)	580-1½ 513 (600-1½)	620-2	553 (600-2)

HIRL Rwy 6-24 0

AK, 20 FEB 2025 to 17 APR 2025

AK, 20 FEB 2025 to 17 APR 2025