

WAAS CH <b>69203</b> <b>W24A</b>	APP CRS <b>238°</b>	Rwy Idg TDZE Apt Elev	<b>6500</b> <b>66</b> <b>67</b>
--	------------------------	-----------------------------	---------------------------------------

# RNAV (GPS) Z RWY 24

DEADHORSE (SCC) (PASC)

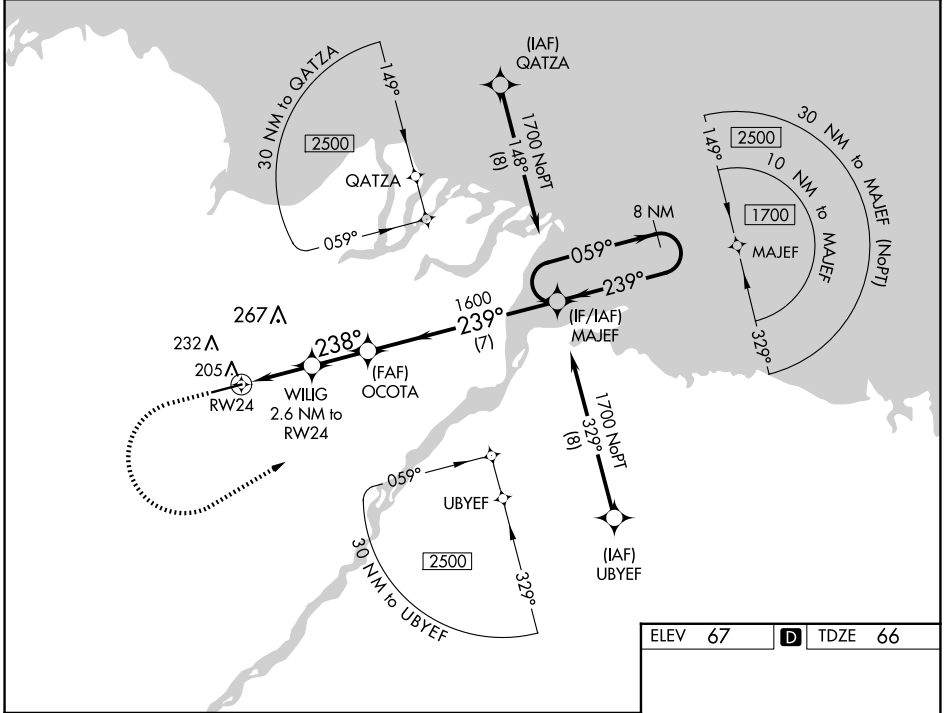
**▼** For uncompensated Baro-VNAV systems, LNAV/VNAV NA below -17°C (2°F) or above 54°C (130°F). DME/DME RNP-0.3 NA. For inop ALS, increase LPV Cat E visibility to RVR 4000, LNAV/VNAV all Cats visibility to RVR 5000, and LNAV Cat E visibility to RVR 6000. # RVR 1800 authorized with use of FD or AP or HUD to DA.

MALSR



MISSED APPROACH: Climb to 500 then climbing left turn to 1700 direct MAJEF and hold.

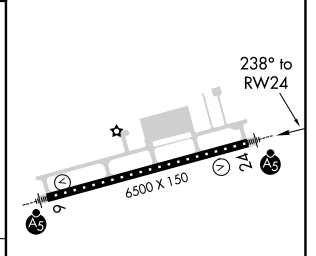
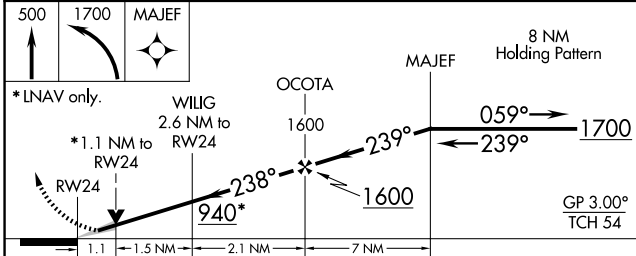
AFIS <b>118.4</b>	ANCHORAGE CENTER <b>134.4 370.9</b>	DEADHORSE RADIO <b>123.6 (CTAF) 0</b>
----------------------	--	--



AK, 20 FEB 2025 to 17 APR 2025

AK, 20 FEB 2025 to 17 APR 2025

ELEV 67	<b>D</b> TDZE 66
---------	------------------



CATEGORY	A	B	C	D	E
LPV DA#		266/24	200 (200-½)		
LNAV/VNAV DA		381/30	315 (400-¾)		
LNAV MDA	460/24	394 (400-½)	460/35	394 (400-¾)	
<b>C</b> CIRCLING	540-1	473 (500-1)	580-1½ 513 (600-1½)	620-2	553 (600-2)

HIRL Rwy 6-24 **0**