

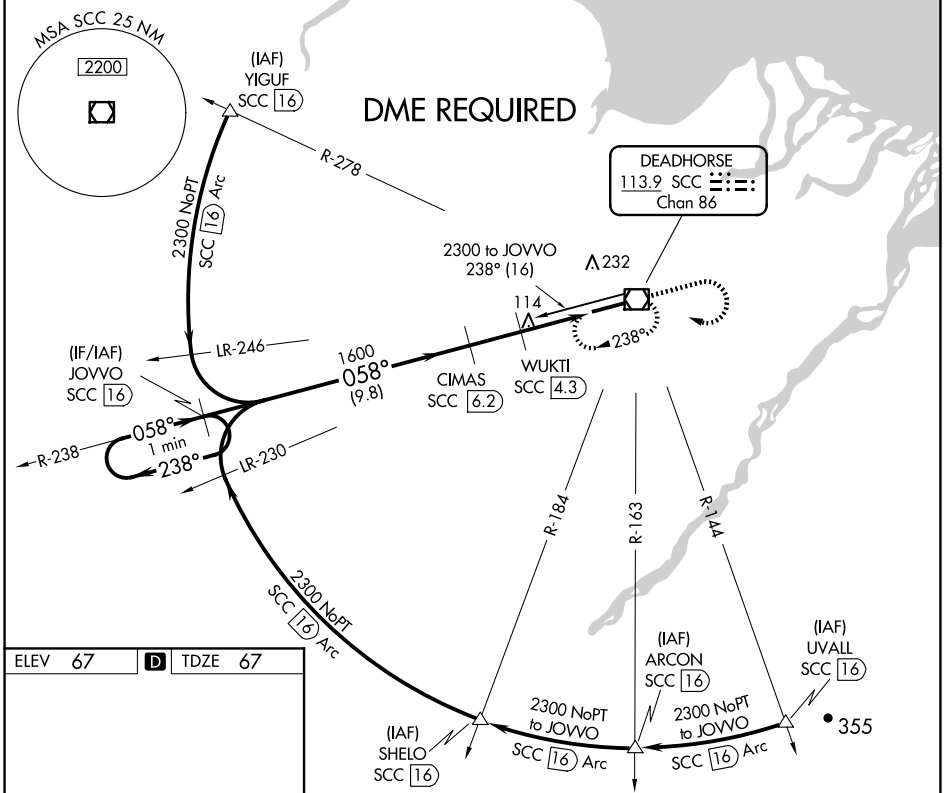
VOR/DME SCC <b>113.9</b> Chan <b>86</b>	APP CRS <b>058°</b>	Rwy Idg <b>6500</b> TDZE <b>67</b> Apt Elev <b>67</b>
---	------------------------	---

# VOR RWY 6

DEADHORSE (SCC) (PASC)

<p>DME required. For inop ALS, increase S-6 Cats C/D/E to RVR 4500.</p>	<p>MALSR</p>	<p>MISSED APPROACH: Climb to 1500 then climbing right turn to 2000 direct SCC VOR/DME and hold, continue climb-in-hold to 2000.</p>

AFIS <b>118.4</b>	ANCHORAGE CENTER <b>134.4 370.9</b>	DEADHORSE RADIO <b>123.6 (CTAF) 0</b>
----------------------	--	--



ELEV 67	<b>D</b>	TDZE 67
---------	----------	---------

058° 4.6 NM from FAF

HIRL Rwy 6-24 0

One Minute Holding Pattern	JOVVO SCC 16	CIMAS SCC 6.2	WUKTI SCC 4.3	1500	2000	SCC
2300 ← 238°	← 058° →	← 058° →	3.02° TCH 50	↑	↷	☐
	1600	980	SCC 2.4			
			SCC 1.6			
	← 9.8 NM	← 1.9 NM	← 1.9 NM	← 0.8		
CATEGORY	A	B	C	D	E	
S-6	380/24 313 (400-1/2)					
<b>C</b> CIRCLING	540-1	473 (500-1)	580-1 1/2 513 (600-1 1/2)	620-2	553 (600-2)	

AK, 20 FEB 2025 to 17 APR 2025

AK, 20 FEB 2025 to 17 APR 2025