

WAAS CH 99738 W19A	APP CRS 187°	Rwy Idg 4902 TDZE 1600 Apt Elev 1600
----------------------------------------	------------------------	-----------------------------------------------------------------

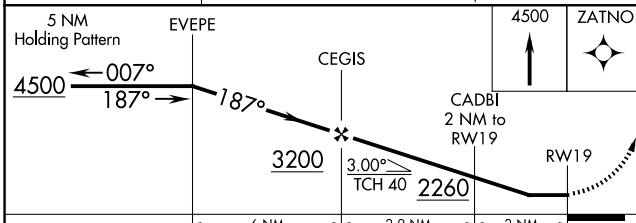
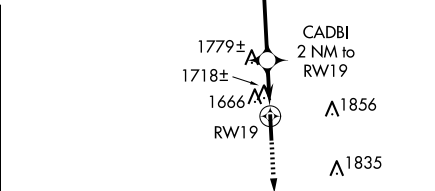
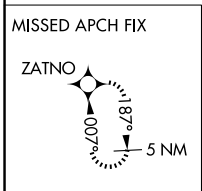
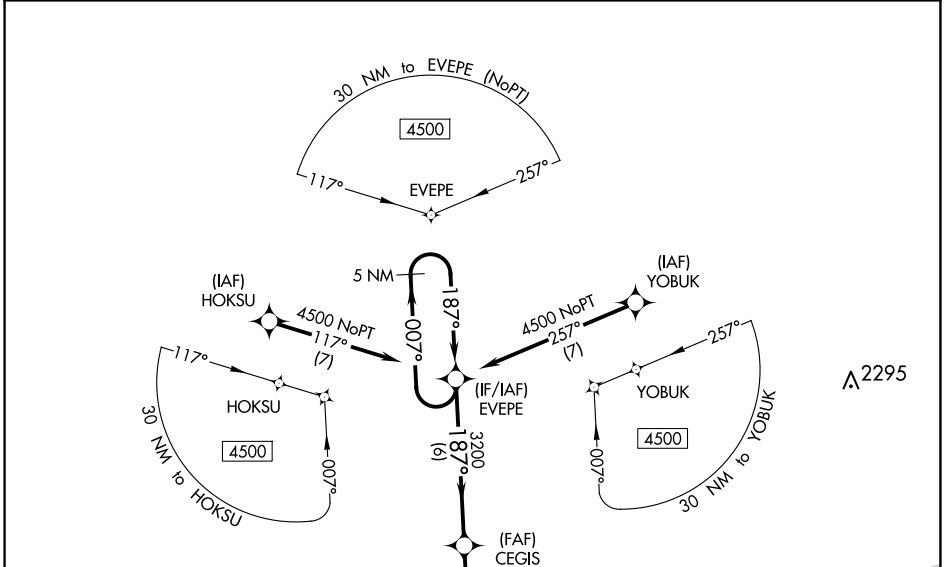
RNAV (GPS) RWY 19

TITUSVILLE (6G1)

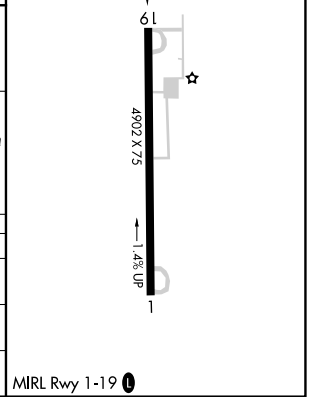
NA DME/DME RNP-0.3 NA. Helicopter visibility reduction below 3/4 SM NA. Use Franklin altimeter setting. When not received, use Port Meade altimeter setting and increase all MDA 40 feet; increase LP Cats C/D and Circling Cat C visibility 1/4 mile. Night landing: Rwy 1 NA.

MISSED APPROACH: Climb to 4500 direct ZATNO and hold.

FKL AWOS-3PT 118.175	YOUNGSTOWN APP CON ★ 133.95 322.3	CTAF 122.9
--------------------------------	---------------------------------------------	----------------------



CATEGORY	A	B	C	D
LP MDA	2020-1 420 (500-1)		2020-1½ 420 (500-1½)	
LNAV MDA	2080-1 480 (500-1)		2080-1¾ 480 (500-1¾)	
C CIRCLING	2100-1 500 (500-1)		2200-1½ 600 (600-1½)	2280-2¼ 680 (700-2¼)



NE-4, 20 FEB 2025 to 20 MAR 2025

NE-4, 20 FEB 2025 to 20 MAR 2025