

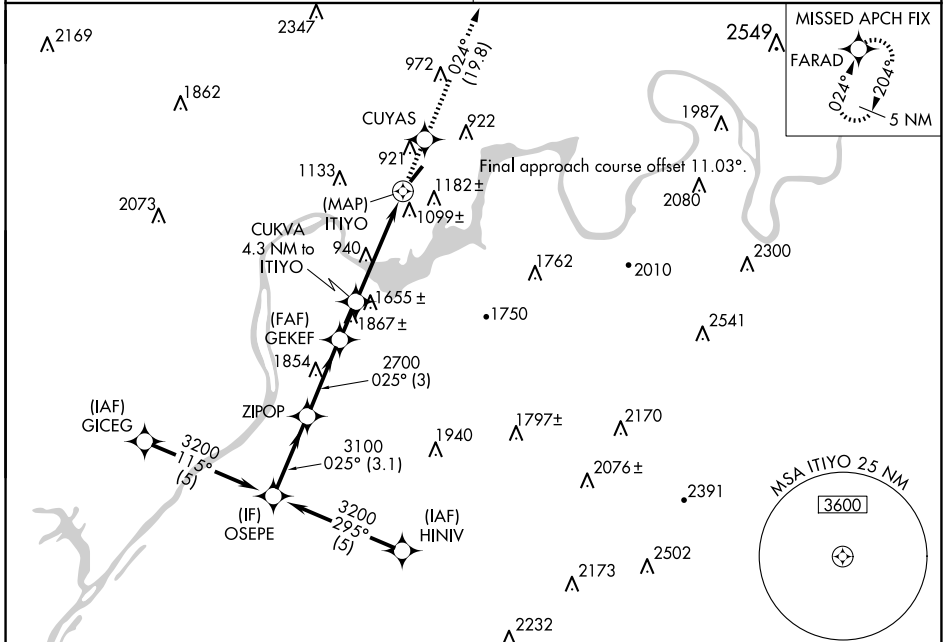
APP CRS	Rwy Idg	3498
025°	TDZE	641
	Apt Elev	641

RNAV (GPS) RWY 4

MARION COUNTY/BROWN FLD (APT)

RNP APCH-GPS	Procedure NA at night. Rwy 4 helicopter visibility reduction below 1 SM NA. Obtain local altimeter setting on CTAF; when not received, use Chattanooga altimeter setting and increase all MDAs 60 feet and LNAV Cat A visibility ¼ SM.	MISSED APPROACH: Climb to 4000 direct CUYAS and on track 024° to FARAD and hold.
--------------	--	--

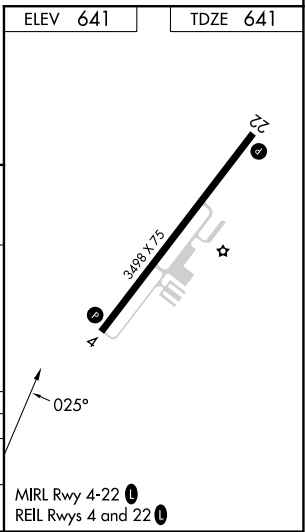
CHATTANOOGA APP CON *	UNICOM
119.2 323.075	122.8 (CTAF) 0



ELEV	641	TDZE	641
------	-----	------	-----



Visual Segment - Obstacles	4000	CUYAS	tr 024°	FARAD
OSEPE	ZIPOP	GEKEF	CUKVA	ITIYO
3200	3100	2700	1854	1867±
3.1 NM	3 NM	1.5 NM	4.3 NM	0.5 NM



CATEGORY	A	B	C	D
LNAV MDA	1500-1 859 (900-1)	1500-1¼ 859 (900-1¼)	1500-2½ 859 (900-2½)	NA
CIRCLING	1560-1¼ 919 (1000-1¼)	1840-1½ 1199 (1200-1½)	1860-3 1219 (1300-3)	NA

SE-1, 20 FEB 2025 to 20 MAR 2025

SE-1, 20 FEB 2025 to 20 MAR 2025