

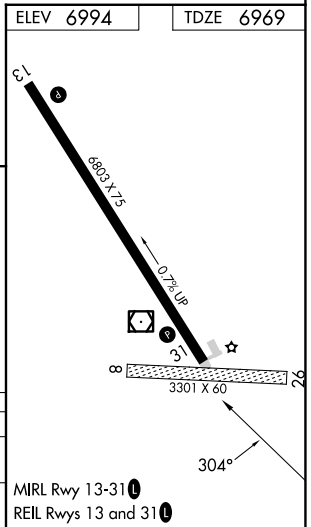
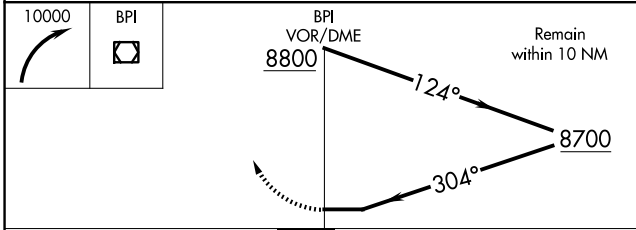
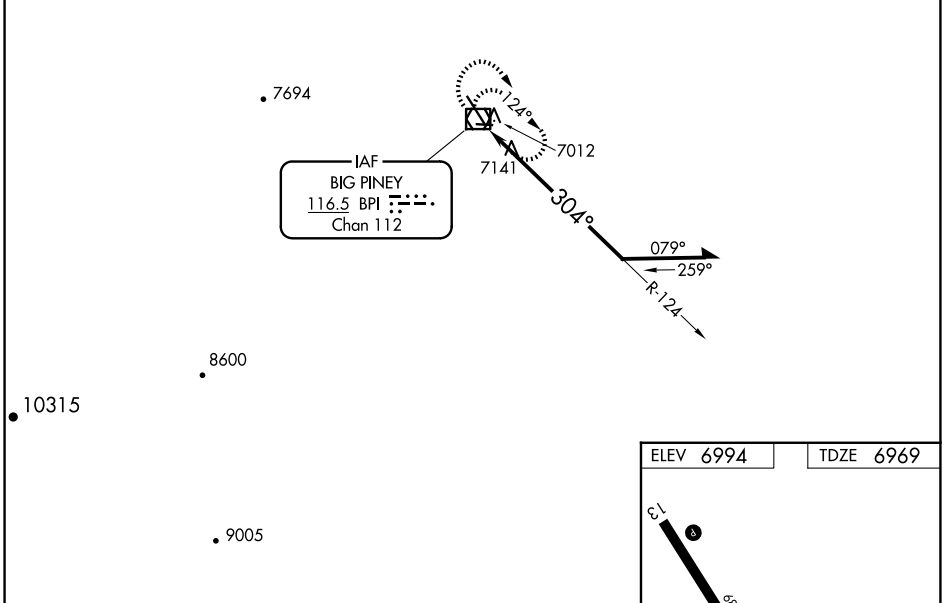
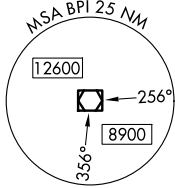
VOR/DME BPI 116.5 Chan 112	APP CRS 304°	Rwy Idg TDZE Apt Elev 6803 6969 6994
--	------------------------	--

VOR RWY 31

MILEY MEML FLD (BPI)

NA	Circling NA to Rwy 8 and 26.	MISSED APPROACH: Climbing right turn to 10000 in BPI VOR/DME holding pattern.	
-----------	------------------------------	---	--

ASOS 135.225	SALT LAKE CENTER 128.35 239.25	UNICOM 122.8 (CTAF)	122.70
------------------------	--	-------------------------------	---------------



CATEGORY	A	B	C	D
S-31	7680-1	711 (700-1)	7680-2	711 (700-2)
CIRCLING	7680-1	686 (700-1)	7800-2 ³ / ₄ 806 (900-2 ³ / ₄)	7820-2 ³ / ₄ 826 (900-2 ³ / ₄)

NW-1, 20 FEB 2025 to 20 MAR 2025

NW-1, 20 FEB 2025 to 20 MAR 2025