

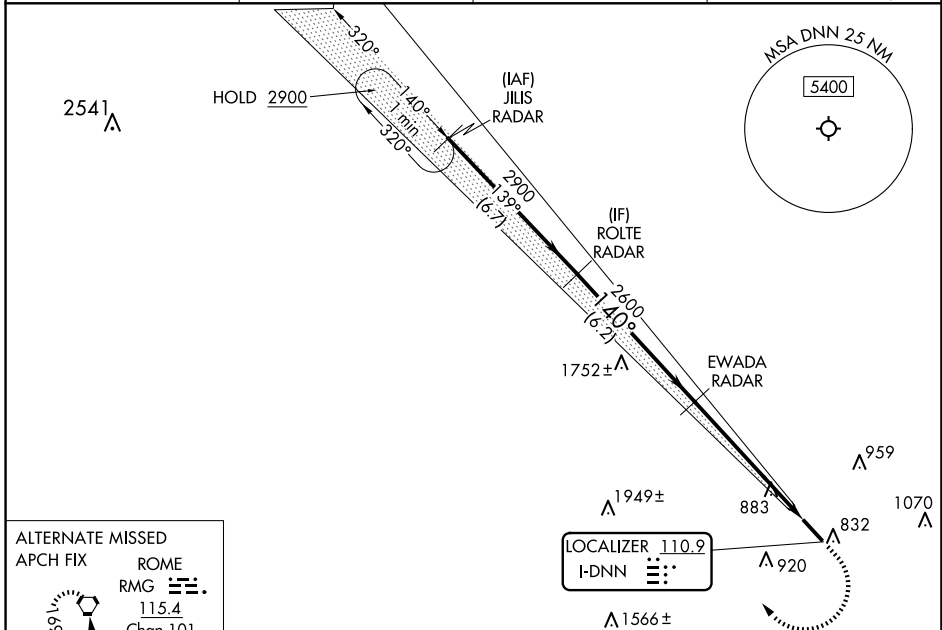
LOC I-DNN <b>110.9</b>	APP CRS <b>140°</b>	Rwy Idg 5496
		TDZE 709
		Apt Elev 709

# ILS or LOC RWY 14

DALTON MUNI (DNN)

RNP APCH - GPS. RADAR required.	MALSR 	MISSED APPROACH: Climb to 1700 then climbing right turn to 3000 direct JILS and hold.
Circling to Rwy 32 NA at night. Autopilot coupled approach NA below 1200 MSL. Rwy 14 helicopter visibility reduction below 3/4 SM NA. Inop table does not apply to S-ILS 14. For inop ALS, increase S-LOC 14 Cat A/B visibility to 1 SM.		

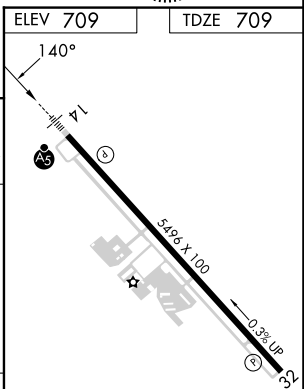
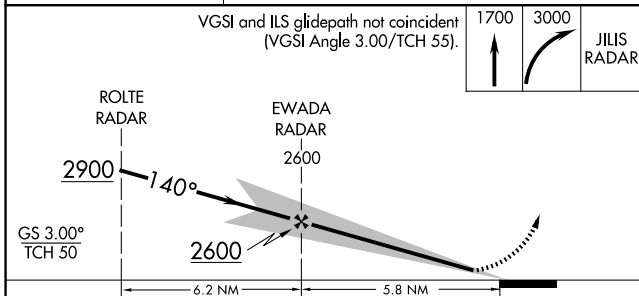
AWOS-3PT <b>127.65</b>	CHATTANOOGA APP CON ★ <b>125.1 379.1</b>	CLNC DEL <b>120.25</b>	UNICOM <b>122.975</b> (CTAF)
---------------------------	---	---------------------------	---------------------------------



ALTERNATE MISSED APCH FIX

ROME  
RMG   
115.4  
Chan 101

R-169



CATEGORY	A	B	C	D
S-ILS 14	1074-3/4		365 (400-3/4)	
S-LOC 14	1260-3/4	551 (600-3/4)	1260-1 1/8	551 (600-1 1/8)
CIRCLING	1260-1	551 (600-1)	1340-1 3/4 631 (700-1 3/4)	1420-2 1/4 711 (800-2 1/4)

HIRL Rwy 14-32

FAF to MAP 5.8 NM

Knots	60	90	120	150	180
Min:Sec	5:48	3:52	2:54	2:19	1:56

SE-4, 20 FEB 2025 to 20 MAR 2025

SE-4, 20 FEB 2025 to 20 MAR 2025