

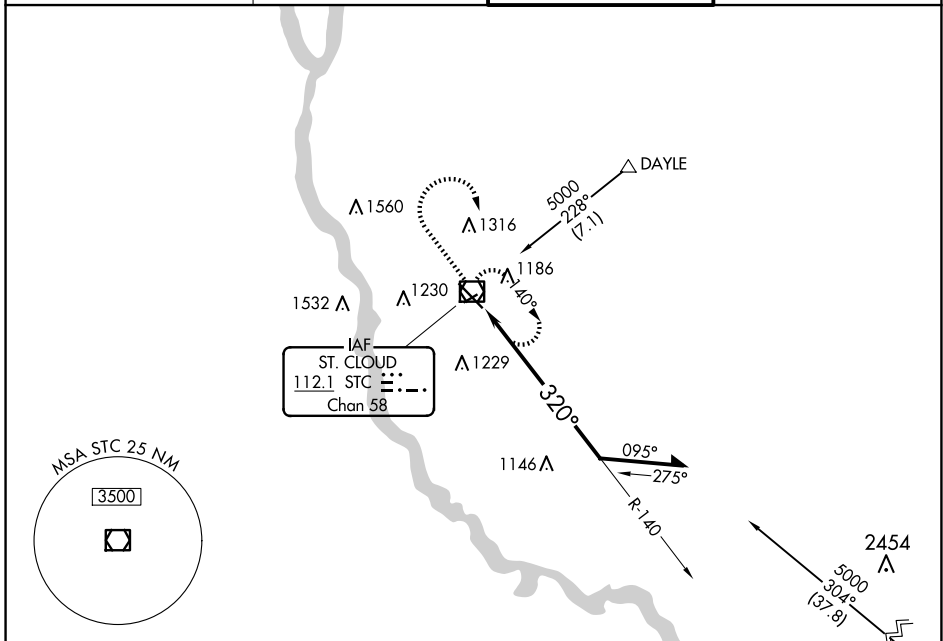
VOR/DME STC <b>112.1</b> Chan <b>58</b>	APP CRS <b>320°</b>	Rwy Idg TDZE <b>7000</b> <b>1020</b>	Apt Elev <b>1031</b>
---	------------------------	--	-------------------------

# VOR RWY 31

ST CLOUD RGNL (STC)

<p><b>⚠</b> For inop ALS, increase S-31 Cat C and D visibility to 1 3/8 SM.</p>	<p><b>MALSR</b> <b>AS</b></p>	<p><b>MISSED APPROACH:</b> Climb to 2700 then right turn direct STC VOR/DME and hold.</p>
---	-----------------------------------	---

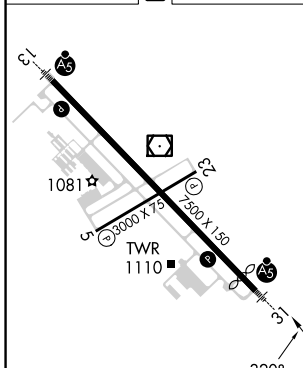
<p>ATIS <b>119.375</b></p>	<p>MINNEAPOLIS CENTER <b>121.05 235.775</b></p>	<p>ST. CLOUD TOWER ★ <b>118.25 (CTAF)</b></p>	<p>GND CON <b>123.75</b></p>
--------------------------------	---	---	----------------------------------



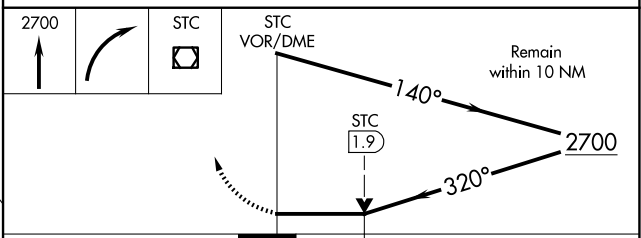
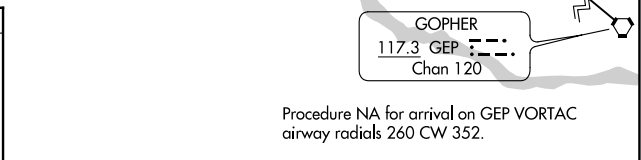
NC-1, 20 FEB 2025 to 20 MAR 2025

NC-1, 20 FEB 2025 to 20 MAR 2025

ELEV 1031	<b>D</b>	TDZE 1020
-----------	----------	-----------



MIRL Rwy 5-23 **⚠**  
HIRL Rwy 13-31 **⚠**



CATEGORY	A	B	C	D
S-31	1460-1/2	440 (500-1/2)	1460-3/4 440 (500-3/4)	1460-1 440 (500-1)
CIRCLING	1500-1	469 (500-1)	1620-1 1/2 589 (600-1 1/2)	1860-2 3/4 829 (900-2 3/4)