

APP CRS 067°	Rwy Idg 2900
	TDZE 558
	Apt Elev 560

RNAV (GPS) RWY 7

SKY MANOR (N40)

RNP APCH

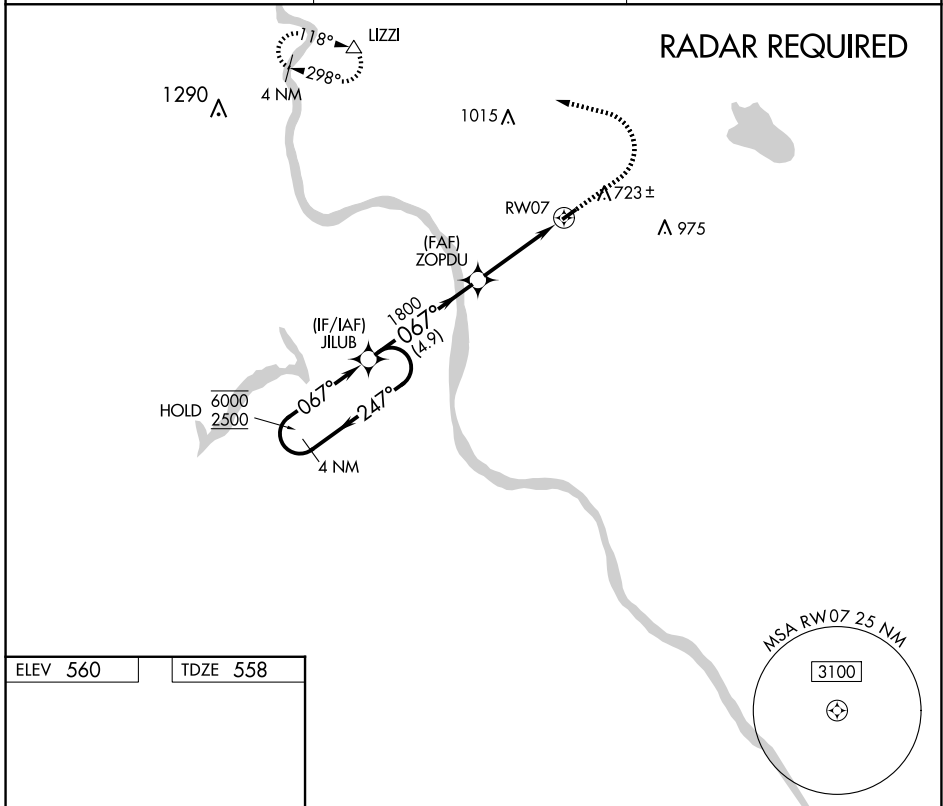
Procedure NA at night. When local altimeter setting not received, use Lehigh Valley Intl altimeter setting. Rwy 7 helicopter visibility reduction below 1 SM NA.

MISSED APPROACH: Climb to 1100 then climbing left turn to 3000 direct LIZZI and hold.

AWOS-3
121.725

ALLENTOWN APP CON
119.65 124.45 351.8

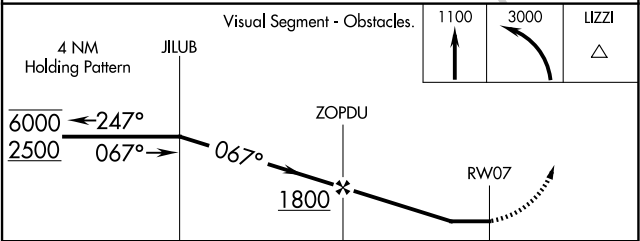
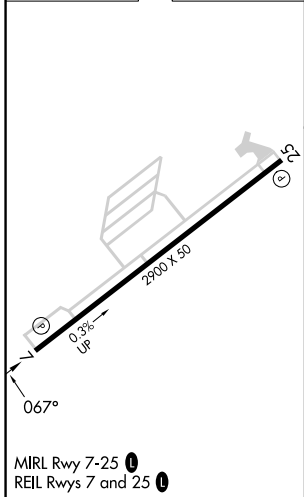
UNICOM
122.975 (CTAF) 0



NE-2, 20 FEB 2025 to 20 MAR 2025

NE-2, 20 FEB 2025 to 20 MAR 2025

ELEV 560	TDZE 558
----------	----------



CATEGORY	A	B	C	D
LNAV MDA	1080-1 522 (600-1)		NA	
<input checked="" type="checkbox"/> CIRCLING	1140-1 580 (600-1)		NA	