

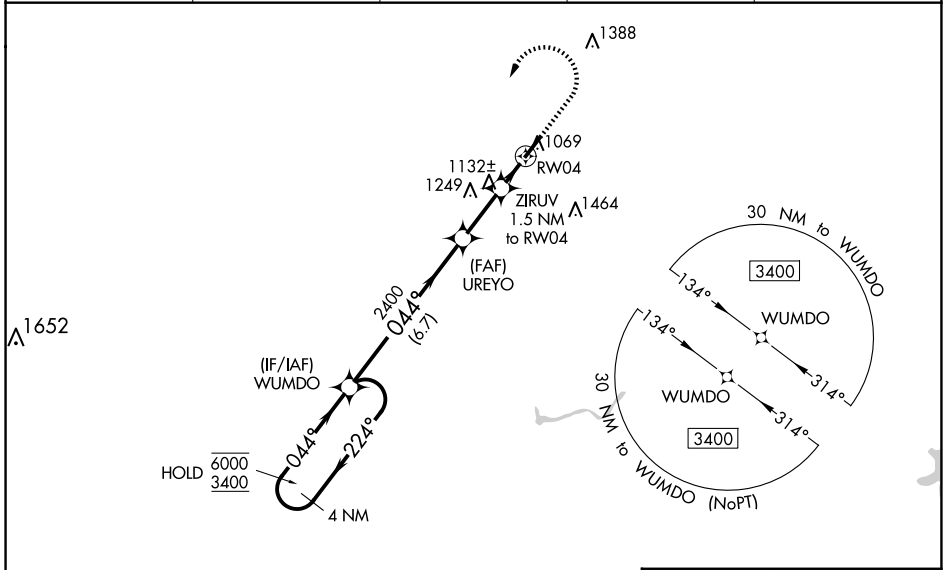
WAAS CH 86543 W04A	APP CRS 044°	Rwy Idg TDZE Apt Elev	5001 978 979
--	------------------------	-----------------------------	---

RNAV (GPS) RWY 4

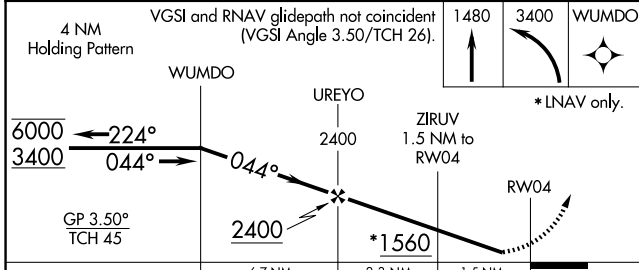
RICHARD DOWNING (I40)

RNP APCH.	Rwy 4 helicopter visibility reduction below 3/4 SM NA. Baro-VNAV NA when using Zanesville altimeter setting. For uncompensated Baro-VNAV systems, LNAV/VNAV NA below -16°C or above 48°C. When local altimeter setting not received, use Zanesville altimeter setting and increase LPV DA to 1344 feet, increase LNAV/VNAV DA to 1310 feet, increase all MDA 80 feet and LPV and LNAV/VNAV visibility 1/2 SM, LNAV Cat C/D visibility 1/4 SM, and Circling Cat C/D visibility 1/2 SM.	MISSED APPROACH: Climb to 1480 then climbing left turn to 3400 direct WUMDO and hold.
-----------	---	--

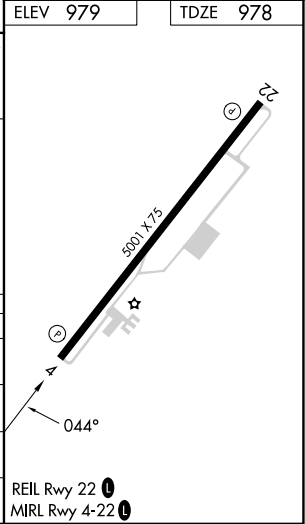
AWOS-3 118.875	INDIANAPOLIS CENTER 124.45 323.275	GCO 121.725	UNICOM 123.0 (CTAF)	122.9 0
--------------------------	--	-----------------------	-------------------------------	----------------



ELEV 979	TDZE 978
----------	----------



CATEGORY	A	B	C	D
LPV DA		1282-7/8	304 (400-7/8)	
LNAV/VNAV DA		1248-7/8	270 (300-7/8)	
LNAV MDA	1400-1	422 (500-1)	1400-1 1/4	422 (500-1 1/4)
CIRCLING	1440-1 461 (500-1)	1500-1 521 (600-1)	1780-2 1/4 801 (900-2 1/4)	1780-2 1/2 801 (900-2 1/2)



EC-2, 20 FEB 2025 to 20 MAR 2025

EC-2, 20 FEB 2025 to 20 MAR 2025