

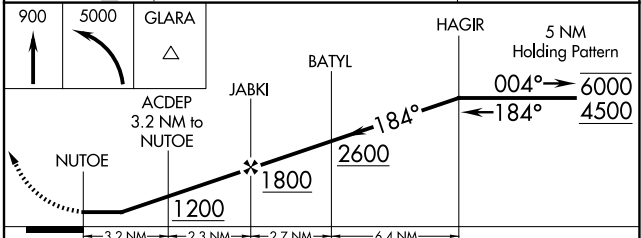
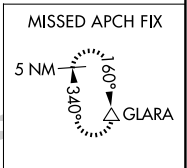
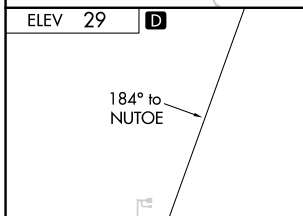
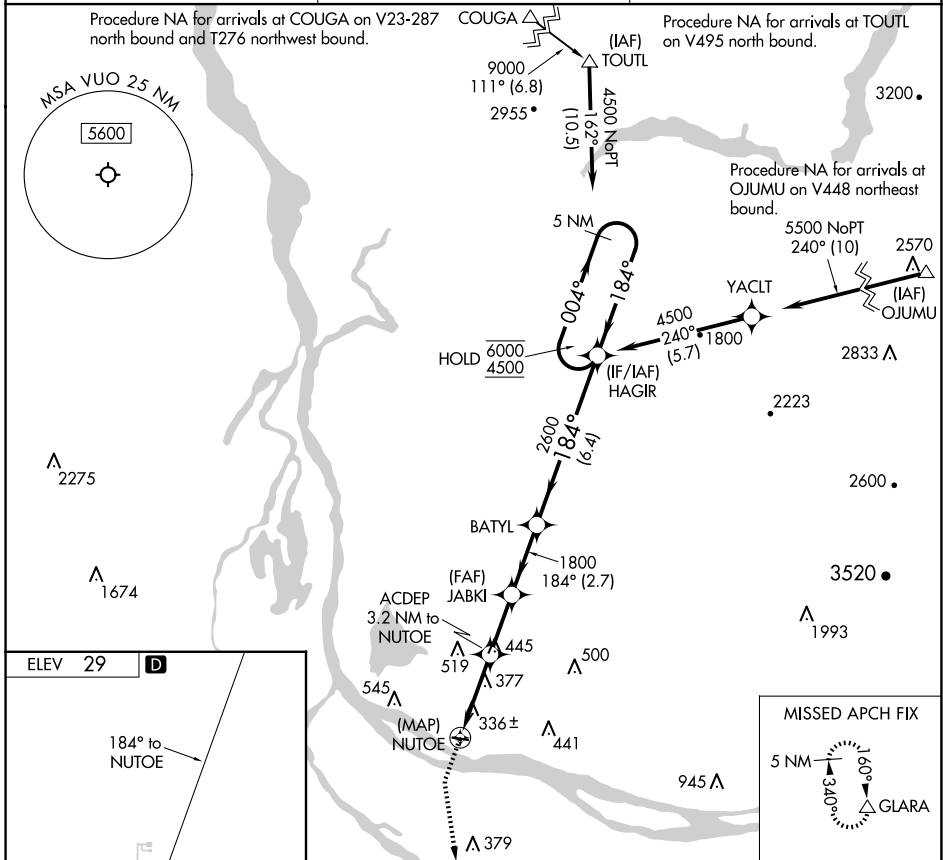
APP CRS	Rwy Idg	N/A
184°	TDZE	N/A
	Apt Elev	29

RNAV (GPS)-B

PEARSON FLD (VUO)

RNP APCH - GPS.	MISSED APPROACH: Climb to 900 then climbing left turn to 5000 direct GLARA and hold, continue climb-in-hold to 5000.
<p>▽ When local altimeter setting not received, use Portland Intl altimeter setting.</p> <p>⚠</p>	

ASOS 135.125	PORTLAND APP CON 124.35 360.8	CLNC DEL 119.0 (CTAF) 0
------------------------	---	-----------------------------------



REIL Rwy 26	MIRL Rwy 8-26 0	PEARSON FLD (VUO)		
45°37'N-122°39'W				
CATEGORY	A	B	C	D
C CIRCLING	720-1 691 (700-1)	740-1 711 (800-1)	NA	

NW-1, 20 FEB 2025 to 20 MAR 2025

NW-1, 20 FEB 2025 to 20 MAR 2025