

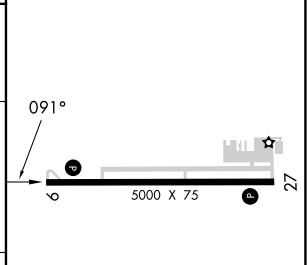
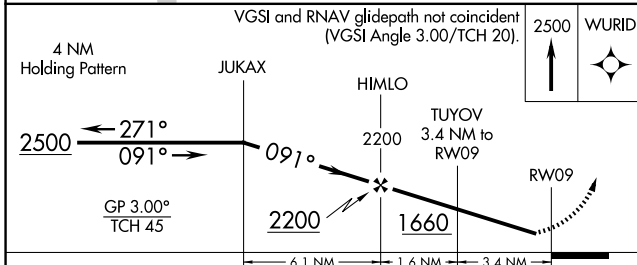
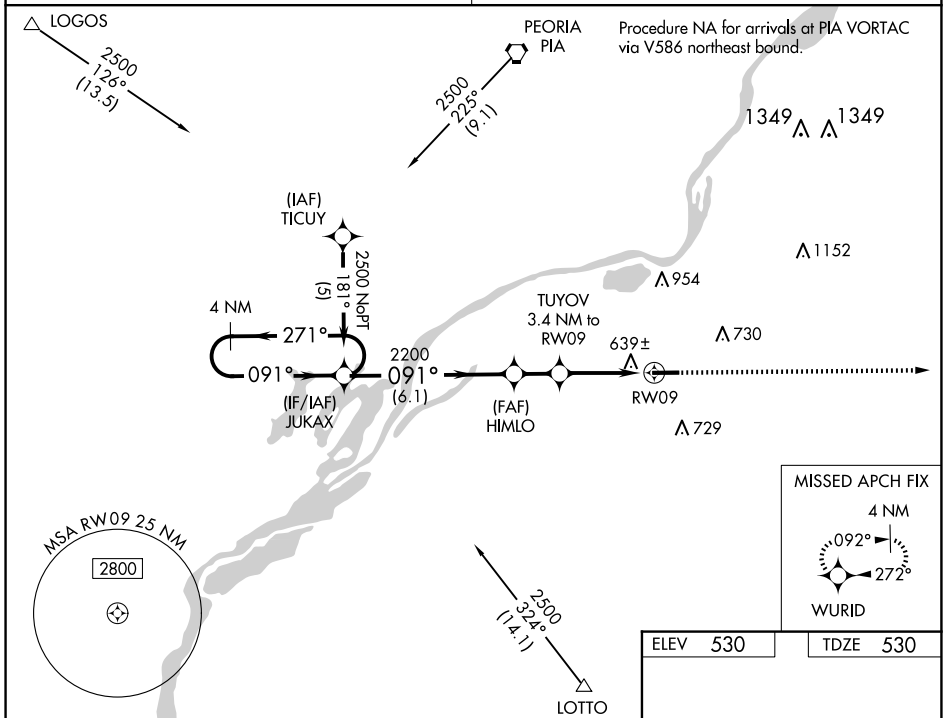
WAAS CH <b>53509</b> <b>W09A</b>	APP CRS <b>091°</b>	Rwy Idg TDZE Apt Elev	<b>5000</b> <b>530</b> <b>530</b>
--	------------------------	-----------------------------	---

# RNAV (GPS) RWY 9

PEKIN MUNI (C15)

RNP APCH-GPS	Baro-VNAV NA. Rwy 9 helicopter visibility reduction below 3/4 SM NA. Use General Downning - Peoria Intl altimeter setting; when not received, use Lincoln glimeter setting; increase LPV DA to 887 feet; increase LNAV/VNAV DA to 1007 feet; increase all MDAs 40 feet and visibility Cat C and D 1/4 SM.	MISSED APPROACH: Climb to 2500 direct WURID and hold.
--------------	---	---

SAINT LOUIS APP CON <b>125.8 269.2</b>	UNICOM <b>122.8 (CTAF)</b>
---	-------------------------------



CATEGORY	A	B	C	D
LPV DA	862-1		332 (400-1)	
LNAV/VNAV DA	982-1 3/8		452 (500-1 1/8)	
LNAV MDA	940-1	410 (500-1)	940-1 1/8	410 (500-1 1/8)
CIRCLING	1060-1	530 (600-1)	1100-1 1/2	1360-2 3/4
			570 (600-1 1/2)	830 (900-2 3/4)

REIL Rwy 9 and 27 **1**

MIRL Rwy 9-27 **1**

EC-3, 20 FEB 2025 to 20 MAR 2025

EC-3, 20 FEB 2025 to 20 MAR 2025