

WAAS CH 72811 W18A	APP CRS 180°	Rwy Idg 5005 TDZE 338 Apt Elev 363
--	------------------------	---

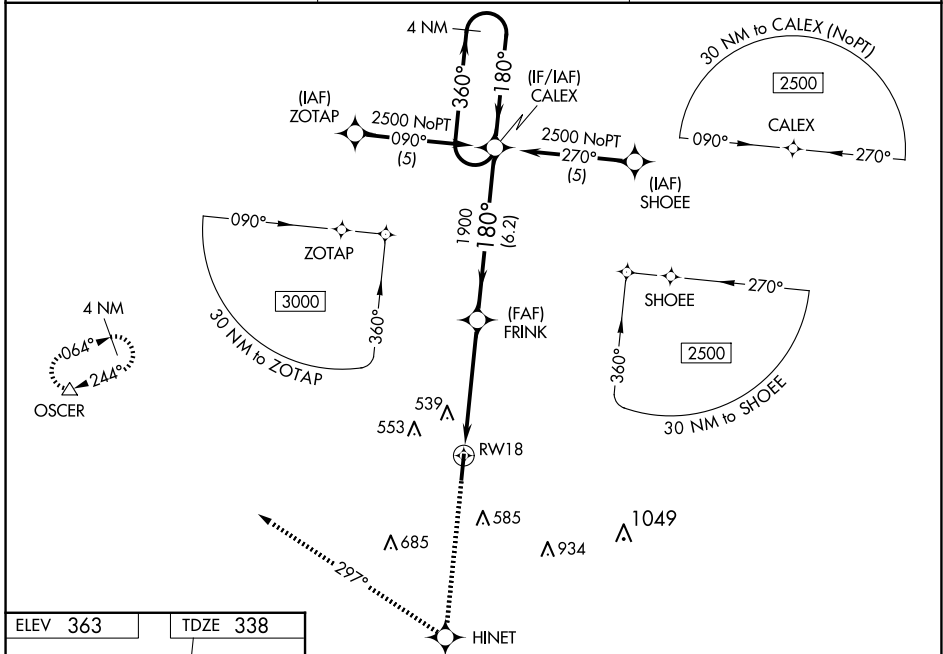
RNAV (GPS) RWY 18

HUNTSVILLE MUNI (UTS)

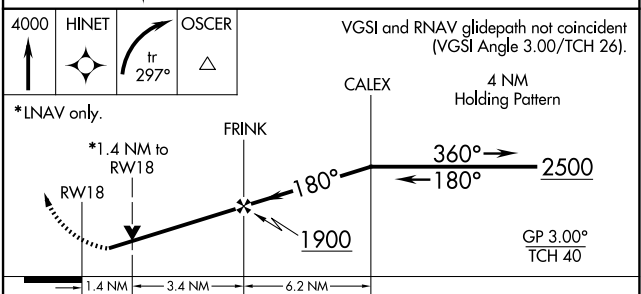
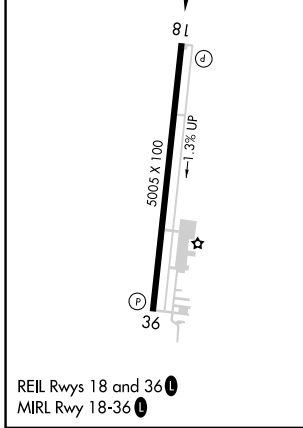
▼ Baro-VNAV NA when using Conroe/North Houston Rgnl altimeter setting. For uncompensated Baro-VNAV systems, LNAV/VNAV NA below -15°C (5°F) or above 54°C (130°F). DME/DME RNP-0.3 NA. Visibility reduction by helicopters NA. VDP NA when using Conroe/North Houston Rgnl altimeter setting. When local altimeter setting not received, use Conroe/North Houston Rgnl altimeter setting and increase all DA 75 feet and all MDA 80 feet; increase LPV and LNAV/VNAV all Cats and Circling Cat C visibility ¼ mile.

MISSED APPROACH: Climb to 4000 direct HINET and right turn via track 297° to OSCER and hold.

ASOS 119.425	HOUSTON CENTER 134.8 269.6	UNICOM 122.8 (CTAF) 0
------------------------	--------------------------------------	---------------------------------



ELEV 363	TDZE 338
-----------------	-----------------



CATEGORY	A	B	C	D
LPV DA		588-1	250 (300-1)	NA
LNAV/VNAV DA		886-2	548 (600-2)	NA
LNAV MDA	840-1	502 (500-1)	840-1½ 502 (500-1½)	NA
CIRCLING	920-1	557 (600-1)	1120-2¼ 757 (800-2¼)	NA

SC-5, 20 FEB 2025 to 20 MAR 2025

SC-5, 20 FEB 2025 to 20 MAR 2025