

(PADRZ2.PADRZ) 21168

PADRZ TWO DEPARTURE (RNAV)

AL-5814 (FAA)

BROWN FLD MUNI (SDM)
SAN DIEGO, CALIFORNIA

ATIS
132.35
BROWN TOWER ★
128.25 225.4
SOCAL DEP CON
119.6 363.1

**TOP ALTITUDE:
15000**

DEPARTURE ROUTE DESCRIPTION

TAKEOFF RUNWAY 8L: Climbing left turn heading 280° to 2900, expect vectors to cross GYWNN at or above 8000, then on track 308° to PADRZ, thence. . . .

TAKEOFF RUNWAY 26R: Climbing right turn heading 280° to 2300, expect vectors to cross GYWNN at or above 8000, then on track 308° to PADRZ, thence. . . .

. . . .on (transition). Maintain 15000. Expect higher altitude 10 minutes after departure.

CHKNN TRANSITION (PADRZ2.CHKNN)

IKAYE TRANSITION (PADRZ2.IKAYE)

OROSZ TRANSITION (PADRZ2.OROSZ)

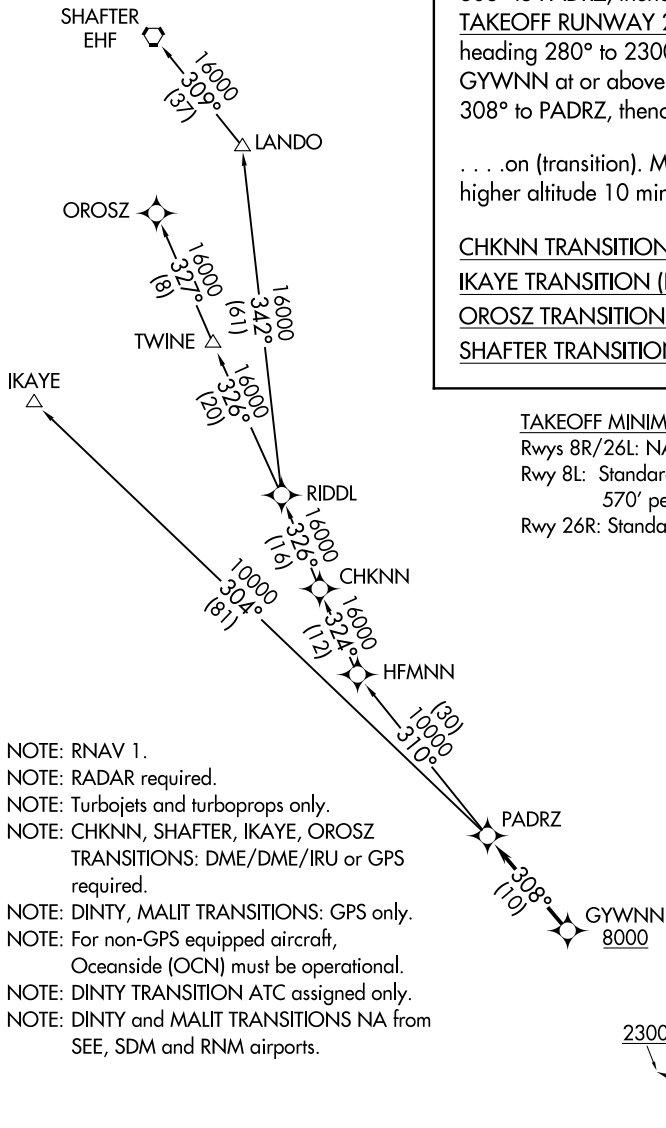
SHAFTER TRANSITION (PADRZ2.EHF)

TAKEOFF MINIMUMS

Rwys 8R/26L: NA-ATC.

Rwy 8L: Standard with minimum climb of 570' per NM to 3100.

Rwy 26R: Standard.



- NOTE: RNAV 1.
- NOTE: RADAR required.
- NOTE: Turbojets and turboprops only.
- NOTE: CHKNN, SHAFTER, IKAYE, OROSZ TRANSITIONS: DME/DME/IRU or GPS required.
- NOTE: DINTY, MALIT TRANSITIONS: GPS only.
- NOTE: For non-GPS equipped aircraft, Oceanside (OCN) must be operational.
- NOTE: DINTY TRANSITION ATC assigned only.
- NOTE: DINTY and MALIT TRANSITIONS NA from SEE, SDM and RNM airports.

NOTE: Chart not to scale.

PADRZ TWO DEPARTURE (RNAV)

(PADRZ2.PADRZ) 07DEC17

SAN DIEGO, CALIFORNIA
BROWN FLD MUNI (SDM)

SW-3, 20 FEB 2025 to 20 MAR 2025

SW-3, 20 FEB 2025 to 20 MAR 2025