

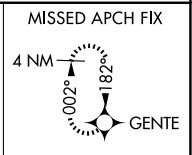
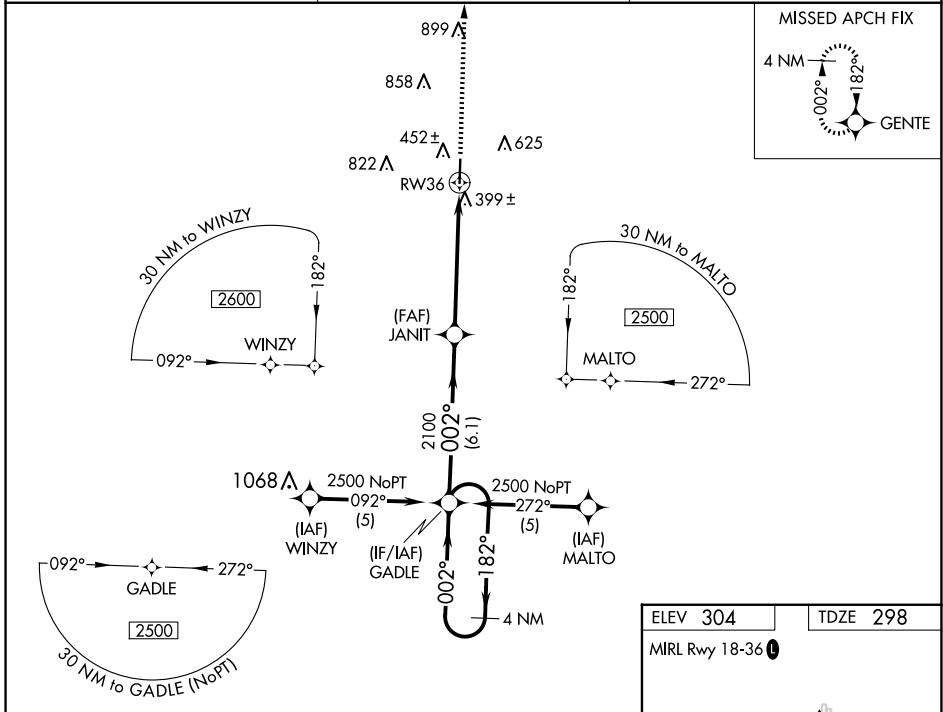
WAAS CH <b>50507</b> <b>W36A</b>	APP CRS <b>002°</b>	Rwy Idg TDZE Apt Elev	<b>5000</b> <b>298</b> <b>304</b>
--	------------------------	-----------------------------	---

# RNAV (GPS) RWY 36

DEXTER MUNI (DXE)

RNP APCH.	<p>Baro-VNAV NA. Use Poplar Bluff altimeter setting, when not received use Cape Girardeau Rgnl altimeter setting and increase all DA 33 feet and all MDA 40 feet; increase LPV and LNAV/VNAV all Cats visibility ¼ SM, increase LNAV Cats C/D visibility ¼ SM.</p>	MISSED APPROACH: Climb to 2500 direct GENTE and hold.
-----------	--	---

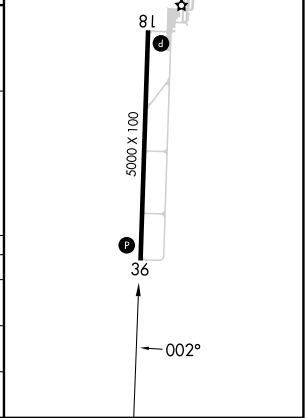
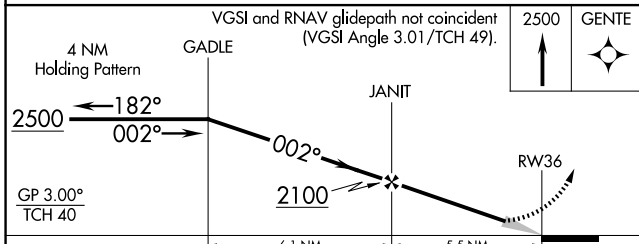
POF ASOS <b>124.225</b>	MEMPHIS CENTER <b>133.65 292.15</b>	UNICOM <b>122.7 (CTAF) 0</b>
----------------------------	--	---------------------------------



NC-3, 20 FEB 2025 to 20 MAR 2025

NC-3, 20 FEB 2025 to 20 MAR 2025

ELEV 304	TDZE 298
MIRL Rwy 18-36	



CATEGORY	A	B	C	D
LPV DA	595-1 297 (300-1)			
LNAV/VNAV DA	795-1¾ 497 (500-1¾)			
LNAV MDA	880-1 582 (600-1)	880-1½ 582 (600-1½)	880-1¾ 582 (600-1¾)	