

| | | | |
|--|------------------------|-----------------------------|---|
| WAAS CH 77719 W20A | APP CRS 205° | Rwy Idg TDZE Apt Elev | 5000 884 892 |
|--|------------------------|-----------------------------|---|

RNAV (GPS) RWY 20

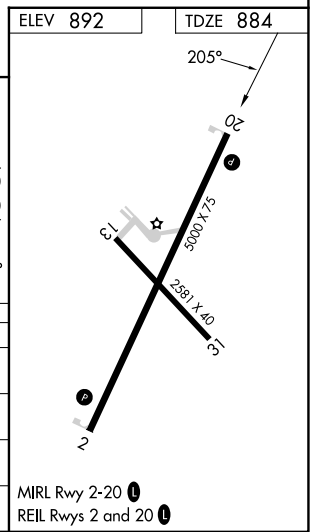
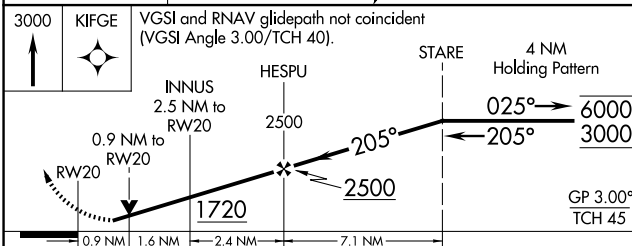
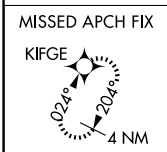
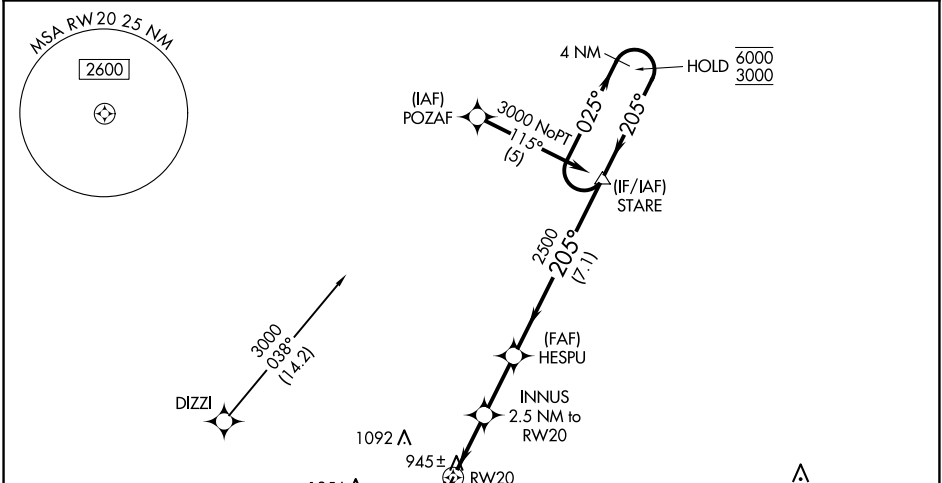
NEVADA MUNI (NVD)

RNP APCH - GPS.

NA Circling NA to Rws 13 and 31. Baro-VNAV and VDP NA when using Joplin altimeter setting. Rwy 20 helicopter visibility reduction below 3/4 SM NA. For uncompensated Baro-VNAV systems, LNAV/VNAV NA below -16°C or above 54°C. When local altimeter setting not received, use Joplin altimeter setting: increase LPV DA to 1249 feet; increase LNAV/VNAV DA to 1326 feet and all visibilities 3/4 SM; increase all MDAs 120 feet and visibility Cat C 1/4 SM.

MISSED APPROACH: Climb to 3000 direct KIFGE and hold.

| | | |
|----------------------------|---|---------------------------------|
| AWOS-3PT 119.175 | KANSAS CITY CENTER 125.55 327.0 | UNICOM 122.8 (CTAF) 0 |
|----------------------------|---|---------------------------------|



| CATEGORY | A | B | C | D |
|--------------|-----------------------|-----------------------|-------------------------------|----|
| LPV DA | | 1139-1 255 (300-1) | | NA |
| LNAV/VNAV DA | | 1216-1 332 (400-1) | | NA |
| LNAV MDA | | 1200-1 316 (400-1) | | NA |
| CIRCLING | 1260-1 368 (400-1) | 1440-1 548 (600-1) | 1440-1 1/2 548 (600-1 1/2) | NA |

NC-3, 20 FEB 2025 to 20 MAR 2025

NC-3, 20 FEB 2025 to 20 MAR 2025